

## Product datasheet for TA346920

### CKMT2 Mouse Monoclonal Antibody [Clone ID: 3F4-G5-H5]

#### Product data:

Product Type:	Primary Antibodies
Clone Name:	3F4-G5-H5
Applications:	WB
Recommend Dilution:	WB: 1:1000
Reactivity:	Rat
Host:	Mouse
Isotype:	IgG2b
Clonality:	Monoclonal
Immunogen:	The immunogen for CKMT2 antibody: purified recombinant human CKMT2 protein fragments expressed in E.coli.
Formulation:	Purified mouse monoclonal in buffer containing 0.1M Tris-Glycine (pH 7.4, 150 mM NaCl) with 0.02% sodium azide, 50% glycerol
Purification:	Affinity purified
Predicted Protein Size:	47 kDa
Gene Name:	creatine kinase, mitochondrial 2
Database Link:	<a href="#">NP_001816</a> <a href="#">Entrez Gene 688698</a> <a href="#">Rat</a>
Background:	Mitochondrial creatine kinase (MtCK) is responsible for the transfer of high energy phosphate from mitochondria to the cytosolic carrier, creatine. It belongs to the creatine kinase isoenzyme family. It exists as two isoenzymes, sarcomeric MtCK and ubiquitous MtCK, encoded by separate genes. Mitochondrial creatine kinase occurs in two different oligomeric forms: dimers and octamers, in contrast to the exclusively dimeric cytosolic creatine kinase isoenzymes. Sarcomeric mitochondrial creatine kinase has 80% homology with the coding exons of ubiquitous mitochondrial creatine kinase. This gene contains sequences homologous to several motifs that are shared among some nuclear genes encoding mitochondrial proteins and thus may be essential for the coordinated activation of these genes during mitochondrial biogenesis. Three transcript variants encoding the same protein have been found for this gene.
Synonyms:	SMTCK

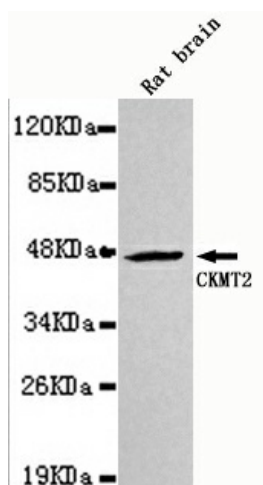


[View online »](#)

Protein Families: Druggable Genome

Protein Pathways: Arginine and proline metabolism, Metabolic pathways

### Product images:



Western blot detection of CKMT2 in Rat Brain lysates using CKMT2 mouse mAb (1:1000 diluted). Predicted band size: 47KDa. Observed band size: 47KDa.