

Product datasheet for TA346872

ATP citrate lyase (ACLY) Mouse Monoclonal Antibody [Clone ID: 3D9-E9-H8]

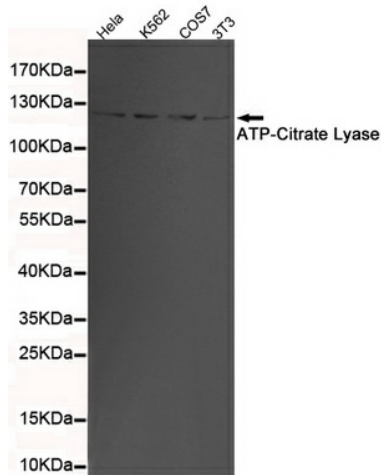
Product data:

Product Type:	Primary Antibodies
Clone Name:	3D9-E9-H8
Applications:	FC, IF, WB
Recommend Dilution:	WB: 1:1000, IF: 1:150, FC: 1:100
Reactivity:	Human, Monkey, Mouse
Host:	Mouse
Isotype:	IgG2a
Clonality:	Monoclonal
Immunogen:	The immunogen for ACLY antibody: purified recombinant human ATP-Citrate Lyase protein fragments expressed in E.coli.
Formulation:	Purified mouse monoclonal in buffer containing 0.1M Tris-Glycine (pH 7.4, 150 mM NaCl) with 0.02% sodium azide, 50% glycerol
Purification:	Affinity purified
Predicted Protein Size:	120 kDa
Gene Name:	ATP citrate lyase
Database Link:	NP_001087 Entrez Gene 104112 MouseEntrez Gene 47 Human
Background:	ATP citrate lyase is the primary enzyme responsible for the synthesis of cytosolic acetyl-CoA in many tissues. The enzyme is a tetramer (relative molecular weight approximately 440,000) of apparently identical subunits. It catalyzes the formation of acetyl-CoA and oxaloacetate from citrate and CoA with a concomitant hydrolysis of ATP to ADP and phosphate. The product, acetyl-CoA, serves several important biosynthetic pathways, including lipogenesis and cholesterologenesis. In nervous tissue, ATP citrate-lyase may be involved in the biosynthesis of acetylcholine. Two transcript variants encoding distinct isoforms have been identified for this gene.
Synonyms:	ACL; ATPCL; CLATP
Protein Families:	Druggable Genome
Protein Pathways:	Citrate cycle (TCA cycle), Metabolic pathways

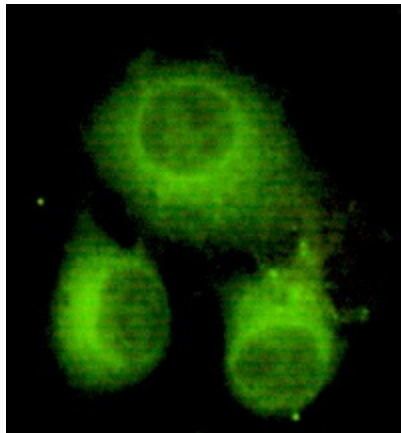


[View online »](#)

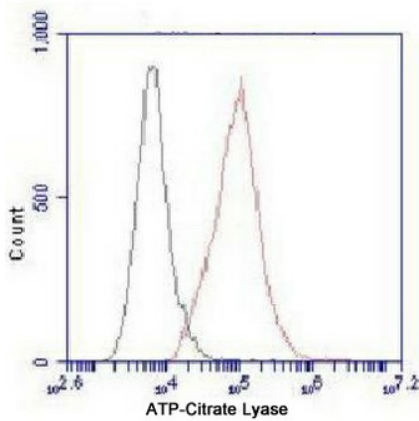
Product images:



Western blot detection of ATP-Citrate Lyase in 3T3, K562, COS7 and HeLa cell lysates using ATP-Citrate Lyase mouse mAb (1:1000 diluted). Predicted band size: 120KDa. Observed band size: 120KDa.



Immunocytochemistry of HeLa cells using anti-ATP-Citrate Lyase (C-terminus) mouse mAb diluted 1:150.



Flow Cytometry analysis of HeLa cells stained with ATP-Citrate Lyase (red, 1/100 dilution), followed by FITC-conjugated goat anti-mouse IgG. Black line histogram represents the isotype control, normal mouse IgG