

Product datasheet for TA337159

IL22 Mouse Monoclonal Antibody [Clone ID: 8F11E2]

Product data:

Product Type:	Primary Antibodies
Clone Name:	8F11E2
Applications:	IHC, WB
Recommend Dilution:	WB: 1-3ug/ml~, IHC-P: 5ug/ml
Reactivity:	Human
Host:	Mouse
Clonality:	Monoclonal
Immunogen:	MAPISSHCRL DkSNFQQPYI TNRTFMLAKE ASLADNNTDV RLIGEKLFHG VSMSERCYLM KQVLNFTLEE VLFQSDRFQ PYMQEVPFL ARLSNRLSTC HIEGDDLHIQ RNVQkLkDTV kKLGESGEIK AIGELDLLFM SLRNACI
Formulation:	PBS containing 0.05% BSA, 0.05% Sodium Azide. Store at 4C short term. Aliquot and store at -20C long term. Avoid freeze-thaw cycles.
Concentration:	0.5 mg/ml
Purification:	Protein G purified
Gene Name:	interleukin 22
Database Link:	NP_065386 Entrez Gene 50616 Human
Background:	IL-22 is an inflammatory cytokine produced by so-called Th22 cells, especially, as well as Th17 cells. Activating through STAT3 signaling cascades, IL-22 is also expressed by numerous types of lymphocytes including LTi and LTi-like cells in the gut, Nk and T cells, and Langerhans cells which are APCs in the skin (1, 2). The protein is therefore expressed in effector cells of both the Innate and Adaptive Immune systems. Th22 cells, a subset of CD4 cells, preferentially express IL-22 and also express CCR6, CCR4 and CCR10--the latter two representing skin-homing receptors (3-5). Th22 cells do not express RORt or T-bet IL-17A or IFN (4). However, AHR appears to be a key priming transcription element for IL-22 as for IL-17A expression (5). IL-6 and TNF induce Th22 priming (1, 5). It also appears to have positive activities in wound healing and tissue repair since deficiencies in IL-22 in mouse models delay healing of intestinal biopsies (6). Other tissue repair activities have also been identified with the protein. Taken together, IL-22 is thought to be a key to maintaining a balance between inflammation and tolerance, or homeostasis, especially in skin and mucosal organs like the gut.



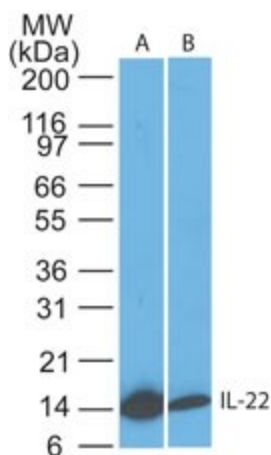
[View online »](#)

Synonyms: IL-21; IL-22; IL-D110; IL-TIF; ILTIF; TIFa; TIFIL-23; zcyto18

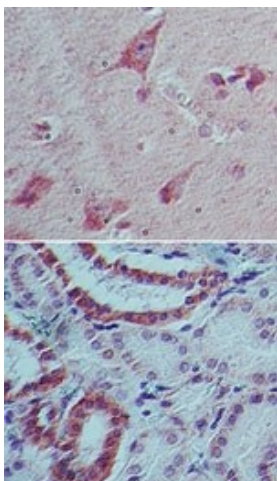
Protein Families: Druggable Genome, Secreted Protein, Transmembrane

Protein Pathways: Cytokine-cytokine receptor interaction, Jak-STAT signaling pathway

Product images:



Western Blot: IL22 Antibody (8F11E2) TA337159 - analysis of IL-22 in A) recombinant protein and B) human spleen lysate using IL-22 antibody at 1 ug/ml. I goat anti-mouse Ig HRP secondary antibody and PicoTect ECL substrate solution were used for this te



Immunohistochemistry-Paraffin: IL22 Antibody (8F11E2) TA337159 - analysis of IL-22 in human brain (top) and kidney tissue (bottom) using IL-22 antibody at 5 ug/ml.