

Product datasheet for TA337142

DECTIN 2 (CLEC6A) Mouse Monoclonal Antibody [Clone ID: 3D1]

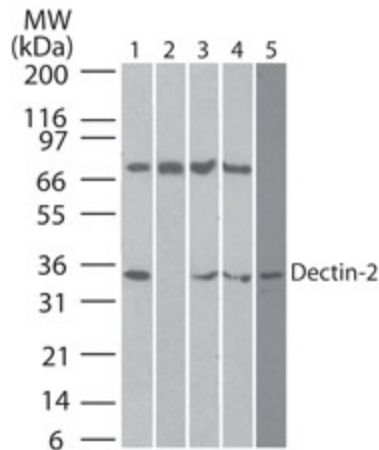
Product data:

Product Type:	Primary Antibodies
Clone Name:	3D1
Applications:	FC, IHC, WB
Recommend Dilution:	WB: 2-5ug/ml~, FC: 0.5ug/5x10 ⁵ cells, IHC-P: 5ug/ml~
Reactivity:	Human
Host:	Mouse
Isotype:	IgG3, kappa
Clonality:	Monoclonal
Immunogen:	A portion of amino acids 75-139 of human Dectin-2 was used as the immunogen for the antibody. 90-106
Formulation:	PBS containing 0.05% BSA, 0.05% Sodium Azide. Store at 4C short term. Aliquot and store at -20C long term. Avoid freeze-thaw cycles.
Concentration:	0.5 mg/ml
Purification:	Protein G purified
Gene Name:	C-type lectin domain family 6 member A
Database Link:	NP_001007034 Entrez Gene 93978 Human
Background:	Dectin-2 is a C-type lectin expressed by dendritic cells, macrophages and inflammatory monocytes. It is a type II membrane receptor, with a short cytoplasmic tail, and a C-terminal C-type lectin domain. Dectin-2 is a receptor with specificity for high mannose structures and mediates cytokine production from DC and other antigen presenting cells. Though, Dectin-2 has no obvious signaling motifs attached to CP tail, reports indicate that Dectin-2 employs FcR 7; for internalization and to activate NF-kB pathway for cytokine production. Though it shares only 20-25% of homology with Dectin-1, it functions similarly as pattern recognition receptor (PRR) for fungal infections, to activate both innate (Syk-CARD9 innate signaling pathway) and adaptive immune responses (by activation of DC) to fungal infections. Thus Dectin-2 is a connector molecule of both innate and adaptive immunity functioning at DC level.
Synonyms:	CLEC4N; CLECSF10
Protein Families:	Transmembrane

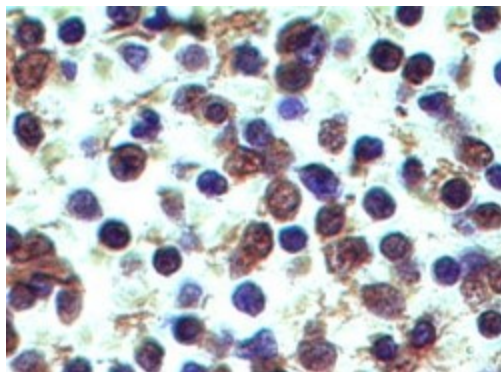


[View online »](#)

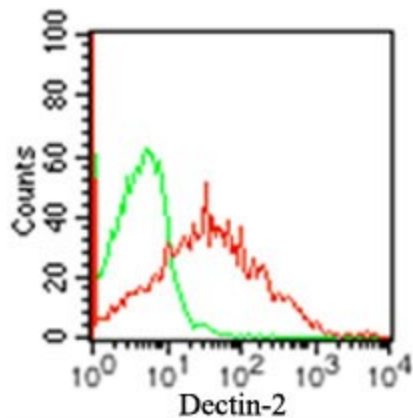
Product images:



Western Blot: DECTIN 2 Antibody (3D1) TA337142 - analysis of Dectin-2 in human heart lysate in the 1) absence and 2) presence of immunizing peptide, 3) mouse heart lysate, 4) rat heart lysate and 5) human Ramos cell lysate using Dectin-2 antibody at 2 u



Immunohistochemistry-Paraffin: DECTIN 2 Antibody (3D1) TA337142 - Formalin-fixed, paraffin-embedded normal human spleen tissue stained with Dectin-2 antibody (5 ug/ml), peroxidase-conjugate and DAB chromogen. s human tissue TMA was used for this test.



Flow Cytometry: DECTIN 2 Antibody (3D1) TA337142 - Surface staining of Dectin-2 on 5×10^5 human PBMCs using 0.5 ug of Dectin-2 antibody (red) and 0.5 ug of isotype control antibody (green). this antibody was used for this test.