

## Product datasheet for **TA337048**

### **Bif (SH3GLB1) Mouse Monoclonal Antibody [Clone ID: 30A882.1.1]**

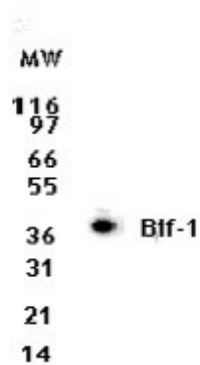
#### **Product data:**

<b>Product Type:</b>	Primary Antibodies
<b>Clone Name:</b>	30A882.1.1
<b>Applications:</b>	WB
<b>Recommend Dilution:</b>	WB: 1-2 ug/ml, IHC: 5ug/ml, IP: 1:10-1:500
<b>Reactivity:</b>	Human
<b>Host:</b>	Mouse
<b>Isotype:</b>	IgG1, kappa
<b>Clonality:</b>	Monoclonal
<b>Immunogen:</b>	A full-length human Bif-1 recombinant protein was used as immunogen.
<b>Formulation:</b>	PBS containing 0.05% BSA, 0.05% Sodium Azide. Store at 4C short term. Aliquot and store at -20C long term. Avoid freeze-thaw cycles.
<b>Concentration:</b>	0.5 mg/ml
<b>Purification:</b>	Protein G purified
<b>Gene Name:</b>	SH3 domain containing GRB2 like endophilin B1
<b>Database Link:</b>	<a href="#">NP_057093 Entrez Gene 51100 Human</a>
<b>Synonyms:</b>	Bif-1; CGI-61; dj612B15.2; PPP1R70
<b>Protein Pathways:</b>	Endocytosis



[View online »](#)

## Product images:



Western Blot: Bif-1/Endophilin-B1 Antibody (30A882.1.1) TA337048 - Analysis for Bif-1/Endophilin-B1 using this antibody at 2 ug/ml dilution against 10 ug of Jurkat cell lysate.