

## Product datasheet for TA337047

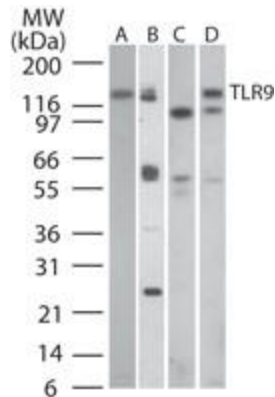
### TLR9 Mouse Monoclonal Antibody [Clone ID: 26C593.2]

#### Product data:

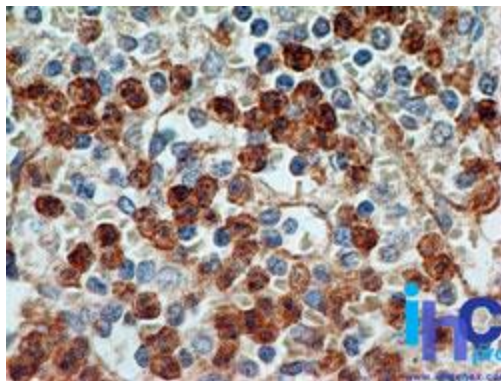
Product Type:	Primary Antibodies
Clone Name:	26C593.2
Applications:	FC, IHC, WB
Recommend Dilution:	WB: 2-5 ug/ml, FC: 0.5-2 ug/10 <sup>6</sup> cells, IF: 1:10-1:500, IHC-P: 5 ug/ml
Reactivity:	Canine, Equine, Human, Mouse, Primate, Rat
Host:	Mouse
Isotype:	IgG1, kappa
Clonality:	Monoclonal
Immunogen:	This antibody was developed against KLH-conjugated synthetic peptide corresponding to amino acids 268-300 of human TLR9 isoform A (Genbank accession no. AAF78037).
Formulation:	PBS containing 0.05% BSA, 0.05% Sodium Azide. Store at 4C short term. Aliquot and store at -20C long term. Avoid freeze-thaw cycles.
Concentration:	0.5 mg/ml
Purification:	Protein G purified
Gene Name:	toll like receptor 9
Database Link:	<a href="#">NP_059138 Entrez Gene 81897 Mouse</a> <a href="#">Entrez Gene 338457 Rat</a> <a href="#">Entrez Gene 54106 Human</a>
Synonyms:	CD289
Note:	Staining of formalin-fixed tissues is enhanced by boiling tissue sections in 10 mM sodium citrate buffer, pH 6.0 for 10-20 min followed by cooling at RT for 20 min. In human PBMC, a ~120 kDa band is observed. A smaller isoform, TLR9 isoform B (Genbank accession no. AAF72190) containing 975 amino acids may also be observed in some cases.
Protein Families:	Druggable Genome, Transmembrane
Protein Pathways:	Toll-like receptor signaling pathway



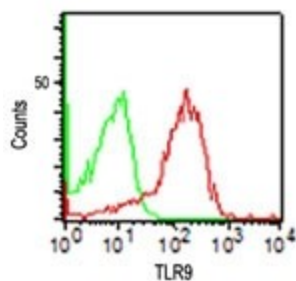
[View online »](#)

**Product images:**

Western Blot: TLR9 Antibody (26C593.2) TA337047 - analysis of TLR9 antibody in A) human PBMCs, B) human intestine, C) mouse intestine and D) rat intestine tissue lysates using this antibody at 3.0 ug/ml



Immunohistochemistry-Paraffin: TLR9 Antibody (26C593.2) TA337047 - Formalin-fixed, paraffin-embedded human spleen probed with TLR9 antibody at 5 ug/ml.



Flow Cytometry: TLR9 Antibody (26C593.2) TA337047 - Intracellular flow analysis of TLR9 in human PBMC using 0.5 ug of TLR9 antibody (red) and isotype control antibody (green).