

Product datasheet for TA336930

Dopamine Transporter (SLC6A3) Mouse Monoclonal Antibody [Clone ID: mAb16]

Product data:

Product Type:	Primary Antibodies
Clone Name:	mAb16
Applications:	IF, IHC, WB
Recommend Dilution:	WB: 1:1000, ELISA: , IF: 1:250, IHC: 1:100, IHC-P: 1:100, IP:
Reactivity:	Mouse, Rat (Does not react with: Human)
Host:	Mouse
Isotype:	IgG1
Clonality:	Monoclonal
Immunogen:	Synthetic peptide corresponding to the N-terminus of rat DAT1. [UniProt# P23977]
Formulation:	PBS containing 0.05% BSA, 0.05% Sodium Azide. Store at 4C short term. Aliquot and store at -20C long term. Avoid freeze-thaw cycles.
Concentration:	1 mg/ml
Purification:	Protein G purified
Gene Name:	solute carrier family 6 member 3
Database Link:	NP_001035 Entrez Gene 13162 Mouse Entrez Gene 24898 Rat Entrez Gene 6531 Human
Background:	DAT1, also known as SLC6A3 and Sodium-dependent dopamine transporter, is a sodium and chloride-dependent dopamine transporter belonging to the solute carrier family 6. Dopamine transporters are distributed widely across the brain in regions with high dopaminergic activity, such as the striatum and substantia nigra. These transporters effectively provide fast acting clearance of dopamine, adrenalin and noradrenalin from the synaptic cleft, thus terminating the neurotransmitter signal. DATs have been found to interact with PRKCABP, TGFB111, SLC18A2 and the N-terminus of SYNGR3. DATs are also the target proteins for psychomotor stimulants such as amphetamines and cocaine. Research has implicated DATs as useful markers in detecting depression, schizophrenia, Parkinson's disease and drug abuse (Kish et al., 2001; Zhu et al., 2000; Zhu et al., 1999).
Synonyms:	DAT; DAT1; PKDYS



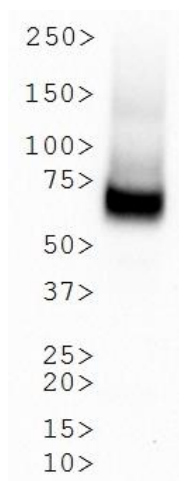
[View online »](#)

Note: This DAT1 (mAb16) antibody is useful for Western blot, Immunocytochemistry/Immunofluorescence, Immunohistochemistry on paraffin-embedded sections and ELISA. In WB a band can be seen at ~70-85 kDa. Use in Immunoprecipitation reported in scientific literature (PMID: 20643191).

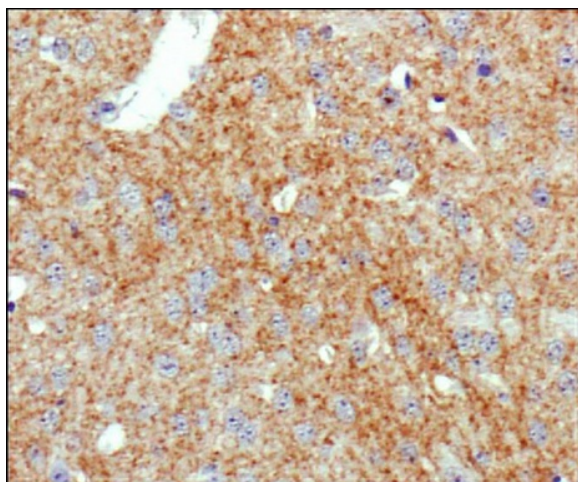
Protein Families: Druggable Genome, Transmembrane

Protein Pathways: Parkinson's disease

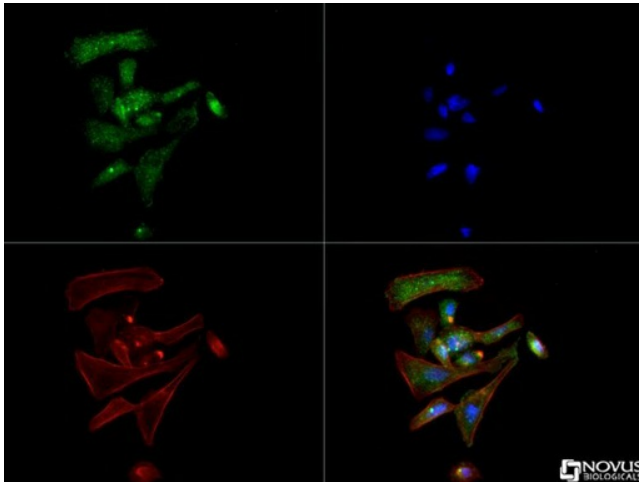
Product images:



Western Blot: DAT1 Antibody (mAb16) TA336930 - Analysis of DAT1 expression in rat striatal membrane tissue lysate.



Immunohistochemistry-Paraffin: DAT1 Antibody (mAb16) TA336930 - IHC analysis of DAT1 in mouse brain using DAB with hematoxylin counterstain.



Immunocytochemistry/Immunofluorescence:
DAT1 Antibody (mAb16) TA336930 - The DAT1
antibody was tested in PC12 cells at a 1:250
dilution against DyLight 488 (Green). Actin and
nuclei were counterstained with Phalloidin-
AlexaFluor 568 (Red) and DAPI (Blue)