

Product datasheet for TA336914

MCP1 (CCL2) Mouse Monoclonal Antibody [Clone ID: 2D8]

Product data:

Product Type:	Primary Antibodies
Clone Name:	2D8
Applications:	ELISA, FC, IF, IHC, WB
Recommend Dilution:	WB: 1:500-1:2000, ELISA: 1:10000, FC: 1:200-1:400, IF: 1:200-1:1000, IHC: 1:200-1:1000, IHC-P: 1:200-1:1000
Reactivity:	Human, Mouse, Primate
Host:	Mouse
Isotype:	IgG1
Clonality:	Monoclonal
Immunogen:	Purified recombinant fragment of human MCP1 expressed in E. coli. [UniProt# P13500]
Formulation:	PBS, 0.03% Sodium Azide. Store at 4C short term. Aliquot and store at -20C long term. Avoid freeze-thaw cycles.
Concentration:	1 mg/ml
Purification:	Ammonium sulfate precipitation
Predicted Protein Size:	11 kDa
Gene Name:	C-C motif chemokine ligand 2
Database Link:	NP_002973 Entrez Gene 20296 Mouse Entrez Gene 6347 Human
Background:	This gene is one of several cytokine genes clustered on the q-arm of chromosome 17. Cytokines are a family of secreted proteins involved in immunoregulatory and inflammatory processes. The protein encoded by this gene is structurally related to the CXC subfamily of cytokines. Members of this subfamily are characterized by two cysteines separated by a single amino acid. This cytokine displays chemotactic activity for monocytes and basophils but not for neutrophils or eosinophils. It has been implicated in the pathogenesis of diseases characterized by monocytic infiltrates, like psoriasis, rheumatoid arthritis and atherosclerosis. It binds to chemokine receptors CCR2 and CCR4.
Synonyms:	GDCF-2; HC11; HSMCR30; MCAF; MCP-1; MCP1; SCYA2; SMC-CF
Note:	This MCP1 (2D8) antibody is useful for Western blot, Immunohistochemistry on paraffin-embedded sections, Immunocytochemistry/Immunofluorescence, Flow Cytometry and ELISA.

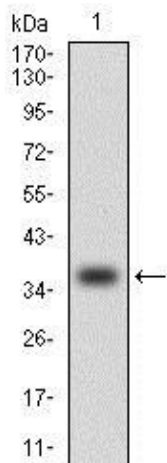


[View online »](#)

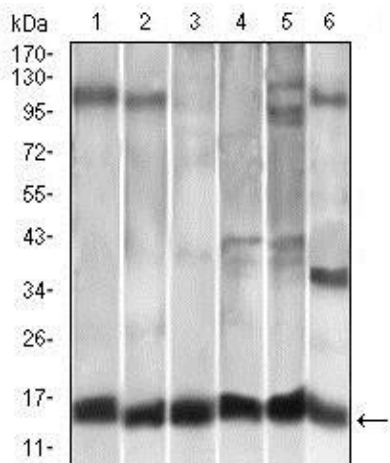
Protein Families: Druggable Genome, Secreted Protein

Protein Pathways: Chemokine signaling pathway, Cytokine-cytokine receptor interaction, NOD-like receptor signaling pathway

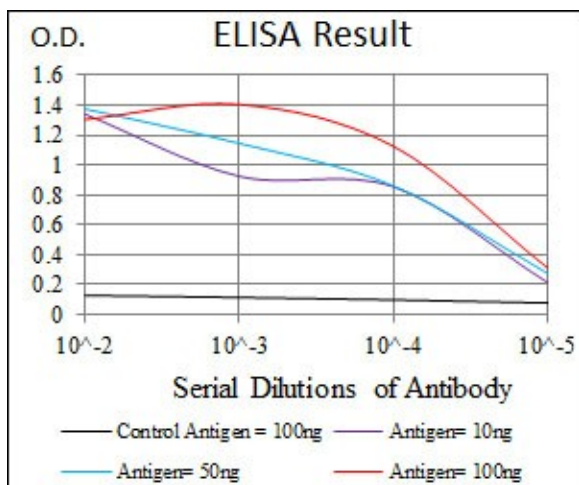
Product images:



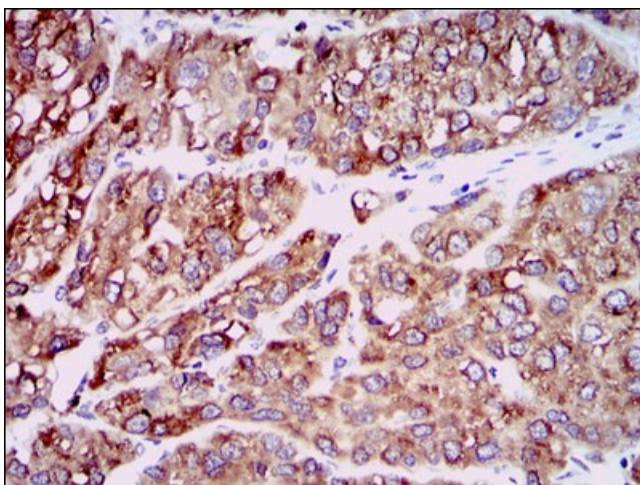
Western Blot: MCP1 Antibody (2D8) [TA336914] - Western blot analysis using MCP1 mAb against human MCP1 (AA: 1-99) recombinant protein. (Expected MW is 36.5 kDa)



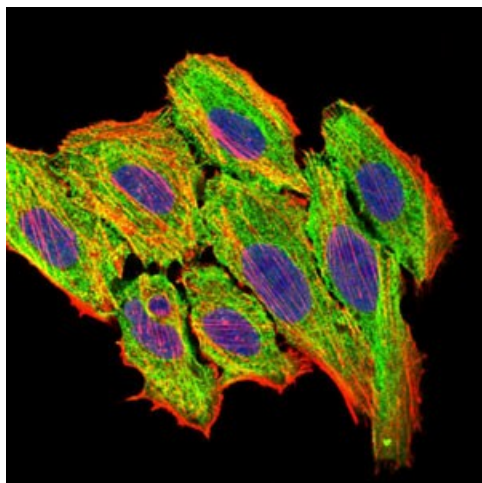
Western Blot: MCP1 Antibody (2D8) [TA336914] - Western blot analysis using MCP1 mouse mAb against A549 (1), HeLa (2), Raw264.7 (3), L1210 (4), C6 (5), and COS-7 (6) cell lysate.



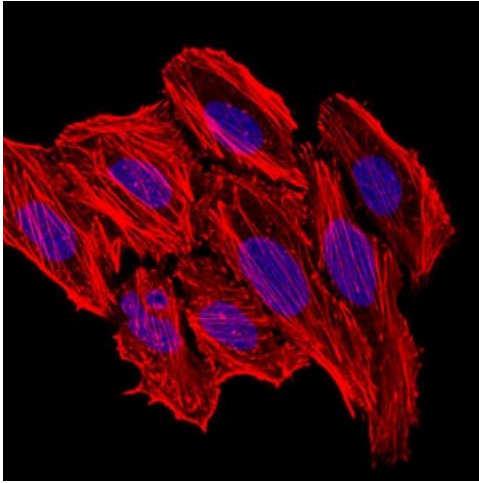
ELISA: MCP1 Antibody (2D8) [TA336914] - Red: Control Antigen (100ng); Purple: Antigen (10ng); Green: Antigen (50ng); Blue: Antigen (100ng).



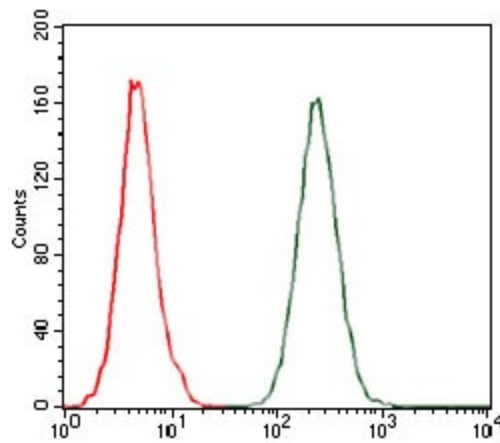
Immunohistochemistry-Paraffin: MCP1 Antibody (2D8) [TA336914] - Immunohistochemical analysis of paraffin-embedded liver cancer tissues using MCP1 mouse mAb with DAB staining.



Immunocytochemistry/Immunofluorescence: MCP1 Antibody (2D8) [TA336914] - Immunofluorescence analysis of HepG2 cells using MCP1 mouse mAb (green). Blue: DRAQ5 fluorescent DNA dye. Red: Actin filaments have been labeled with Alexa Fluor-555 phalloidin.



Immunocytochemistry/Immunofluorescence:
MCP1 Antibody (2D8) [TA336914] -
Immunofluorescence analysis of HepG2 cells.
Blue: DRAQ5 fluorescent DNA dye. Red: Actin
filaments have been labeled with Alexa Fluor-555
phalloidin.



Flow Cytometry: MCP1 Antibody (2D8)
[TA336914] - Flow cytometric analysis of A549
cells using MCP1 mouse mAb (green) and
negative control (red).