

Product datasheet for TA336777

GATA4 Mouse Monoclonal Antibody [Clone ID: 6H10]

Product data:

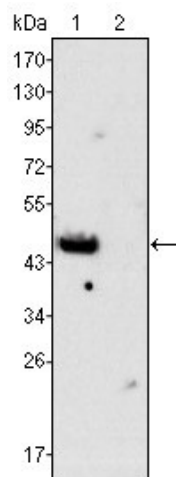
Product Type:	Primary Antibodies
Clone Name:	6H10
Applications:	WB
Recommend Dilution:	WB: 1:500-1:2000, ELISA: 1:10000
Reactivity:	Human, Mouse, Rat
Host:	Mouse
Isotype:	IgG2b
Clonality:	Monoclonal
Immunogen:	Purified recombinant fragment of human GATA4 expressed in E. coli. [UniProt# P43694]
Formulation:	Preservative: 0.05% Sodium Azide. Aliquot and store at -20C or -80C. Avoid freeze-thaw cycles.
Concentration:	This product is unpurified. The exact concentration of antibody is not quantifiable.
Purification:	Ascites
Predicted Protein Size:	46 kDa
Gene Name:	GATA binding protein 4
Database Link:	NP_002043 Entrez Gene 14463 Mouse Entrez Gene 54254 Rat Entrez Gene 2626 Human
Background:	GATA4, also known as GATA binding protein 4, is a 46 kDa member of the GATA family of zinc-finger transcription factors. Members of this family is involved in the development of cardiac hypertrophy and remodeling, and plays a critical role in regulating basal and agonist or stress induced gene expression in cardiac and smooth muscle cell types. These factors recognize the GATA motif which is present in the promoters of many genes. GATA4 contains a conserved MAPK phosphorylation site at serine 105 within the transcriptional activation domain. Serine 105 of GATA4 is phosphorylated in response to agonist stimulation through MEK 1 ERK1 / 2, and weakly through JNK or p38 MAPKs. GATA4 is thought to regulate genes involved in embryogenesis and in myocardial differentiation and function. Mutations in this gene have been associated with cardiac septal defects.
Synonyms:	ASD2; TACHD; TOF; VSD1
Note:	This GATA4 (6H10) antibody is useful for Western blot and ELISA.



[View online »](#)

Protein Families: Embryonic stem cells, ES Cell Differentiation/IPS, Induced pluripotent stem cells, Transcription Factors

Product images:



Western Blot: GATA4 Antibody (6H10) TA336777 - Western blot analysis using anti-GATA4 mAb against rat fetal heart (1) and adult heart (2) tissues lysate.