

Product datasheet for **TA336637**

IGF2R Mouse Monoclonal Antibody [Clone ID: 2G11]

Product data:

Product Type:	Primary Antibodies
Clone Name:	2G11
Applications:	FC, IF, IHC
Recommend Dilution:	WB: 1 ug/ml, ELISA: , FC: 1 ug per million cells, IF: 1:10-1:250, IHC: 1:100, IHC-P: 1:100, IP: 1:10-1:500
Reactivity:	Bovine, Human, Primate, Rat
Host:	Mouse
Isotype:	IgG2a, kappa
Clonality:	Monoclonal
Immunogen:	Purified bovine Mannose 6 Phosphate Receptor (Cation independent) [UniProt# P08169]
Formulation:	PBS containing 0.05% BSA, 0.05% Sodium Azide. Store at 4C short term. Aliquot and store at -20C long term. Avoid freeze-thaw cycles.
Concentration:	1 mg/ml
Purification:	Protein A purified
Gene Name:	insulin like growth factor 2 receptor
Database Link:	NP_000867 Entrez Gene 25151 RatEntrez Gene 3482 Human
Background:	Mannose 6 phosphate is a sequence tag that plays a pivotal role in delivering proteins to the lysosome. Specifically, the mannose 6 phosphate sequence is tagged to N-linked oligosaccharides of lysosomal hydrolases as they pass through the cis-Golgi network. Once the lysosomal enzymes are tagged with the M6P sequence, they are destined to the late endosome by way of vesicular transport. After a low pH dissociates the M6P Receptor from its ligand, the M6P sequences are recycled. Additionally, M6P is bound by lectin in the immune system, and is converted to fructose 6-phosphate by mannose phosphate isomerase.
Synonyms:	CD222; CIMPR; M6P-R; MPR1; MPRI



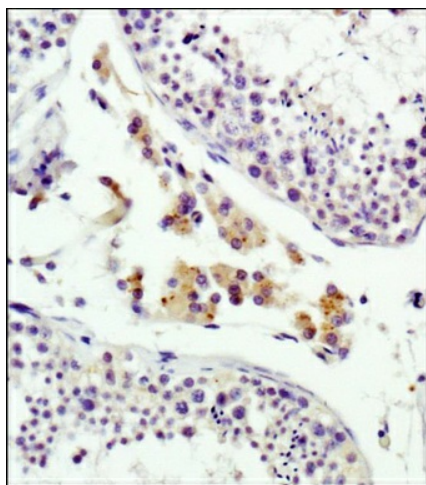
[View online »](#)

Note: By Western Blot, a 300 kDa protein representing Mannose 6 Phosphate Receptor is seen in HeLa cell extract under non-reducing conditions. Immunofluorescence staining of Mannose 6 Phosphate Receptor in HeLa cells with this antibody results in perinuclear staining. This antibody is also useful in Flow Cytometry, Immunoprecipitation, ELISA and Immunohistochemistry-on paraffin embedded sections.

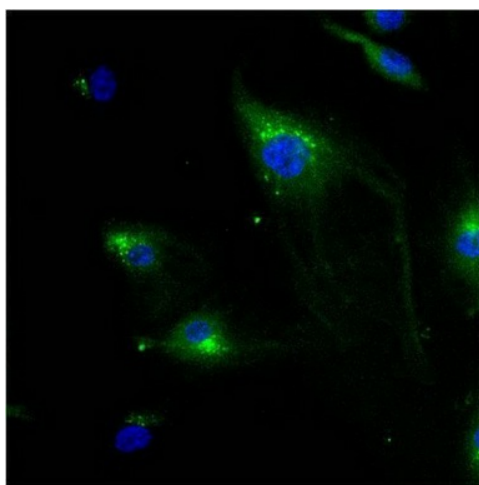
Protein Families: Druggable Genome, Transmembrane

Protein Pathways: Lysosome

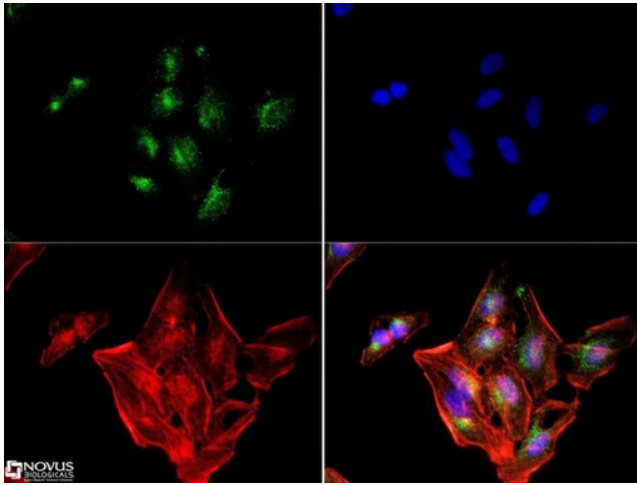
Product images:



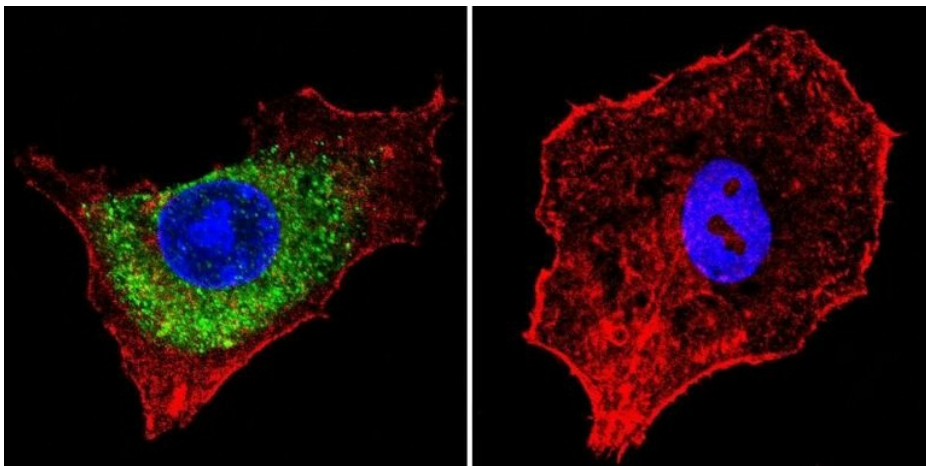
Immunohistochemistry: Mannose 6 Phosphate Receptor (Cation independent) Antibody (2G11) TA336637 - Staining of human testis using TA336637 antibody at 1:100.



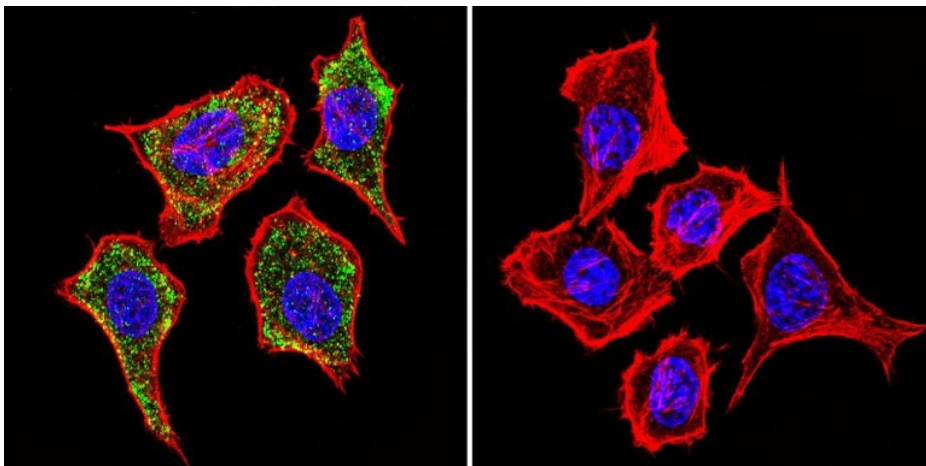
Immunocytochemistry/Immunofluorescence: Mannose 6 Phosphate Receptor (Cation independent) Antibody (2G11) TA336637 - HMVEC Cells



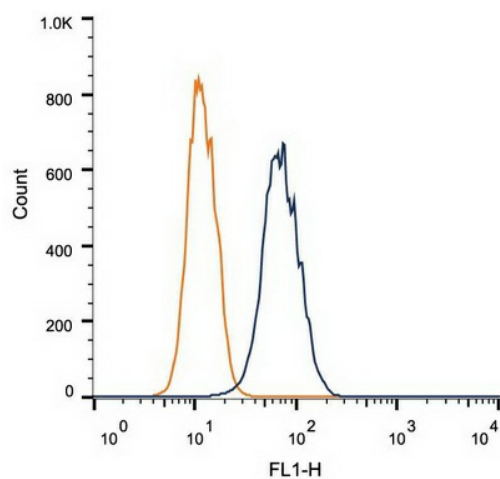
Immunocytochemistry/Immunofluorescence: Mannose 6 Phosphate Receptor (Cation independent) Antibody (2G11) TA336637 - Mannose 6 Phosphate Receptor (Cation independent) antibody (2G11) was tested at (1:250) in HeLa cells with Dylight 488 (green). Nuclei a



Immunocytochemistry/Immunofluorescence: Mannose 6 Phosphate Receptor (Cation independent) Antibody (2G11) TA336637 - Mannose 6-Phosphate Receptor staining (green), F-Actin staining with Phalloidin (red) and nuclei with DAPI (blue) is shown. Cells were g



Immunocytochemistry/Immunofluorescence: Mannose 6 Phosphate Receptor (Cation independent) Antibody (2G11) TA336637 - Staining in Hela Cells. Mannose 6-Phosphate Receptor staining (green), F-Actin staining with Phalloidin (red) and nuclei with DAPI (blue)



Flow Cytometry: Mannose 6 Phosphate Receptor (Cation independent) Antibody (2G11) TA336637 - Intracellular flow cytometric staining of 1×10^6 MCF-7 cells using Mannose 6 Phosphate Receptor antibody (dark blue). Isotype control shown in orange. An anti