

## Product datasheet for TA336582

### p53 (TP53) Mouse Monoclonal Antibody [Clone ID: Pab 240]

#### Product data:

Product Type:	Primary Antibodies
Clone Name:	Pab 240
Applications:	WB
Recommend Dilution:	WB: 1:1000-1:2000, ELISA: 1:100-1:2000, FC: 1:10-1:1000, IF: , IHC: 1:250-1:500, IHC-F: , IHC-P: 1:250-1:500, IP: 10ug/mg
Reactivity:	Human, Mouse, Rat, Yeast (Does not react with: Xenopus)
Host:	Mouse
Isotype:	IgG1, kappa
Clonality:	Monoclonal
Immunogen:	Gel-purified p53-beta-galactosidase fusion protein containing murine p53 from aa 14-389 (derived from pSV53C cDNA clone).
Formulation:	PBS containing 0.05% BSA, 0.05% Sodium Azide. Store at 4C short term. Aliquot and store at -20C long term. Avoid freeze-thaw cycles.
Concentration:	1 mg/ml
Purification:	Protein G purified
Gene Name:	tumor protein p53
Database Link:	<a href="#">NP_000537 Entrez Gene 24842 Rat</a> <a href="#">Entrez Gene 7157 Human</a>
Background:	The tumor suppressor protein p53 plays an important role in cancer development. The p53 protein is a transcription factor that acts as a checkpoint in the cell cycle, either preventing or initiating programmed cell death. Since cancer occurs as the malfunction in the proliferation of cells, disrupting p53 activity allows abnormal cells to multiply or allows a tumor's progression from benign to malignant. This antibody detects p53 in all mammals tested. Detection of p53 using this antibody: 50% of colon cancer sections are positive, 30% of breast cancer sections and 70% of lung cancer sections. Normal and premalignant tissues are negative.
Synonyms:	BCC7; LFS1; P53; TRP53



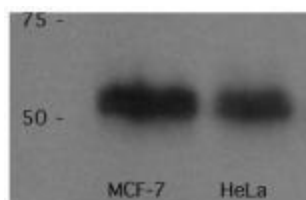
[View online »](#)

**Note:** Antigen retrieval with IHC-P is not essential but may optimise staining. In IP this antibody reacts with only mutant p53 protein under non-denaturing conditions. Use in Immunocytochemistry/immunofluorescence reported in scientific literature (PMID 1394225) Use in Immunohistochemistry-Frozen reported in various pieces of scientific literature.

**Protein Families:** Druggable Genome, Stem cell - Pluripotency, Transcription Factors

**Protein Pathways:** Amyotrophic lateral sclerosis (ALS), Apoptosis, Basal cell carcinoma, Bladder cancer, Cell cycle, Chronic myeloid leukemia, Colorectal cancer, Endometrial cancer, Glioma, Huntington's disease, MAPK signaling pathway, Melanoma, Neurotrophin signaling pathway, Non-small cell lung cancer, p53 signaling pathway, Pancreatic cancer, Pathways in cancer, Prostate cancer, Small cell lung cancer, Thyroid cancer, Wnt signaling pathway

### Product images:



Western Blot: p53 Antibody (PAb 240) TA336582 - WB analysis of p53 in MCF7 and HeLa lysates. Image courtesy of anonymous customer product review.