

Product datasheet for TA336417

NFKB1 Mouse Monoclonal Antibody [Clone ID: 2J10D7]

Product data:

Product Type:	Primary Antibodies
Clone Name:	2J10D7
Applications:	IHC, WB
Recommend Dilution:	WB: 2-5 ug/ml, IHC-P: 5 ug/ml
Reactivity:	Human
Host:	Mouse
Isotype:	IgG1, kappa
Clonality:	Monoclonal
Immunogen:	A portion of amino acids 150-200 of human NF-kB (p50) was used as the immunogen.
Formulation:	PBS containing 0.05% BSA, 0.05% Sodium Azide. Store at 4C short term. Aliquot and store at -20C long term. Avoid freeze-thaw cycles.
Concentration:	0.5 mg/ml
Purification:	Protein G purified
Gene Name:	nuclear factor kappa B subunit 1
Database Link:	NP_003989 Entrez Gene 4790 Human
Background:	<p>Principal Names: Nuclear factor of kappa light polypeptide gene enhancer in B-cells 1 (NFKB1); DNA-binding factor KBF1; EBP-1; NFKB-p50; Official Gene Symbol: NFKB1 Gene ID: 4790 (Human) Gene Map Locus: 4q24 (human) NF-kB is a nuclear transcription factor activated by various extra and intracellular stimuli such as cytokines, UV radiation, stress, in injury, and by bacterial and viral products. It is involved in regulation of various cellular events including cell growth, differentiation, proliferation, apoptosis and inflammation. NFKB1 (p50), a 50KDa functional sub-unit of NF-kB, is a member of Rel protein family. It is synthesized as a p105 precursor protein and consists of an N-terminal conserved RHD-region containing nuclear localization signal, DNA-binding and dimerization domains. NFKB1 (p50) forms homodimers or heterodimerizes with p65, forming the functional NF-kB factor. NFKB1 (p50) directs the nuclear translocation of NF-kB and is instrumental in its DNA-binding. Pathological role of NF-kB has been suggested in AIDS, hematogenic cancer cell metastasis and rheumatoid arthritis.</p>



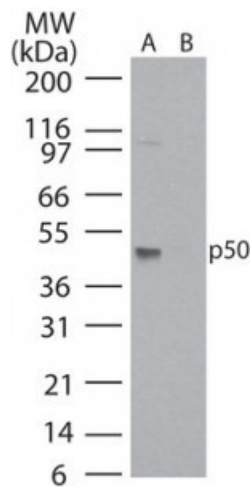
[View online »](#)

Synonyms: CVID12; EBP-1; KBF1; NF-kappa-B; NF-kappaB; NF-kB1; NFkappaB; NFKB-p50; NFKB-p105; p50; p105

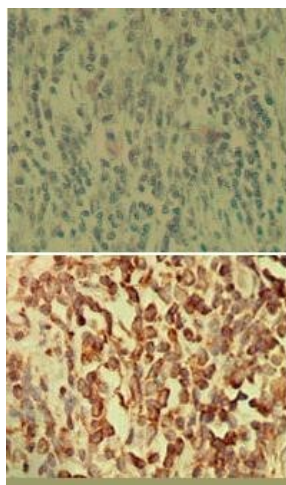
Protein Families: Druggable Genome, Transcription Factors

Protein Pathways: Acute myeloid leukemia, Adipocytokine signaling pathway, Apoptosis, B cell receptor signaling pathway, Chemokine signaling pathway, Chronic myeloid leukemia, Cytosolic DNA-sensing pathway, Epithelial cell signaling in Helicobacter pylori infection, MAPK signaling pathway, Metabolic pathways, Neurotrophin signaling pathway, NOD-like receptor signaling pathway, Pancreatic cancer, Pathways in cancer, Prostate cancer, RIG-I-like receptor signaling pathway, Small cell lung cancer, T cell receptor signaling pathway, Toll-like receptor signaling pathway

Product images:



Western Blot: NFkB p105/p50 Antibody (2J10D7) TA336417 - analysis of p50 in HeLa lysate in the A) absence and B) presence of immunizing peptide using p50 antibody at 5 ug/ml.



Immunohistochemistry-Paraffin: NFkB p105/p50 Antibody (2J10D7) TA336417 - analysis of human breast tumor tissue using an isotype control antibody (top) and p50 antibody (bottom) at 5 ug/ml.