

Product datasheet for **TA336410**

TLR4 Mouse Monoclonal Antibody [Clone ID: 76B357.1]

Product data:

Product Type:	Primary Antibodies
Clone Name:	76B357.1
Applications:	FC, IHC, WB
Recommend Dilution:	WB: 1-3 ug/ml, FC: 0.5-2 ug/10 ⁶ cells (Cell Surface), IF: 1:10-1:500, IHC: 1:10-1:500, IHC-F: 1:500, IHC-P: 5 ug/ml
Reactivity:	Human, Mouse, Rat, Squirrel
Host:	Mouse
Isotype:	IgG2b, kappa
Clonality:	Monoclonal
Immunogen:	This antibody was developed against a portion of amino acids 100-200 of human TLR4 (NP_612564).
Formulation:	PBS containing 0.05% BSA, 0.05% Sodium Azide. Store at 4C short term. Aliquot and store at -20C long term. Avoid freeze-thaw cycles.
Concentration:	0.5 mg/ml
Purification:	Protein G purified
Gene Name:	toll like receptor 4
Database Link:	NP_612564 Entrez Gene 21898 Mouse Entrez Gene 29260 Rat Entrez Gene 7099 Human
Background:	The Toll-like receptor (TLR) family in mammal comprises a family of transmembrane proteins characterized by multiple copies of leucine rich repeats in the extracellular domain and IL-1 receptor motif in the cytoplasmic domain. Like its counterparts in Drosophila, TLRs signal through adaptor molecules (1). The TLR family is a phylogenetically conserved mediator of innate immunity that is essential for microbial recognition (2). Ten human homologs of TLRs (TLR1-10) have been described (3). Among this family of receptors, TLR2 and TLR4 have been most studied. These studies have suggested that TLR2 and TLR4 may serve as potential main mediators of LPS signaling (4,5). The TLR4 cDNA codes for a protein consisting of 799 amino acids with approximate molecular weight of 88 kDa (6).
Synonyms:	ARMD10; CD284; TLR-4; TOLL



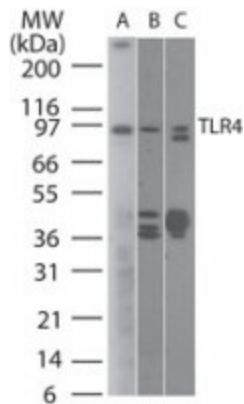
[View online »](#)

Note: Flow (Intracellular) use reported in literature (See Cohen et al, 2008); Immunofluorescence (See Nowicki et al, 2009); IHC-F (Nowicki et al, 2012); Flow (cell surface) use reported in scientific literature (PMID 23796194)

Protein Families: Druggable Genome, Transmembrane

Protein Pathways: Pathogenic Escherichia coli infection, Toll-like receptor signaling pathway

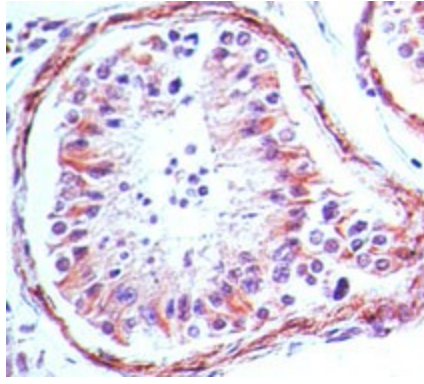
Product images:



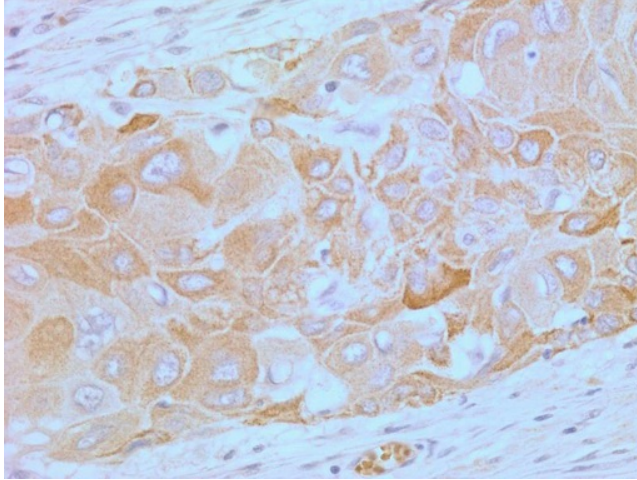
Western Blot: TLR4 Antibody (76B357.1) TA336410 - analysis of TLR4 antibody using TLR4 antibody at 2 ug/ml on (A) human intestine and 6 ug/ml on (B) mouse intestine and (C) rat intestine lysate.



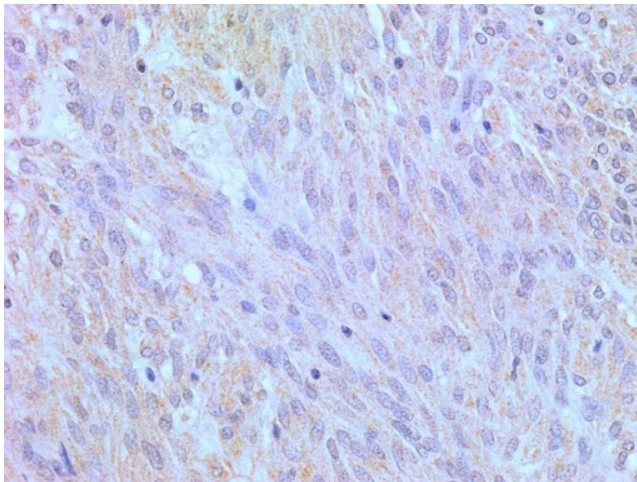
Immunohistochemistry-Paraffin: TLR4 Antibody (76B357.1) TA336410 - Formalin-fixed, paraffin-embedded human skin stained with TLR4 antibody (5 ug/ml), peroxidase-conjugate and DAB chromogen. Staining of formalin-fixed tissues is enhanced by boiling tissue



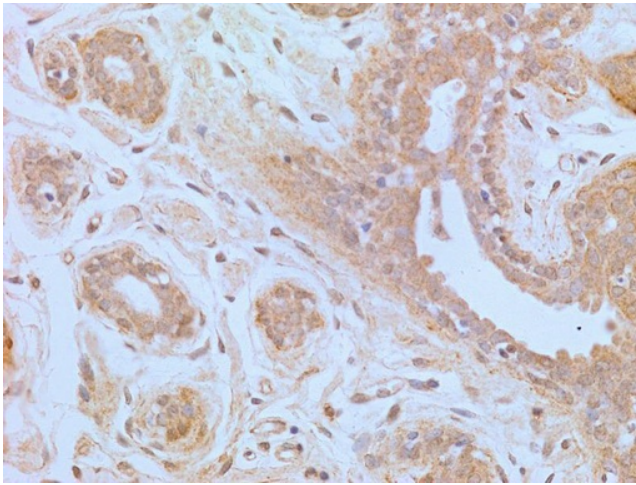
Immunohistochemistry-Paraffin: TLR4 Antibody (76B357.1) TA336410 - Formalin-fixed, paraffin-embedded human testis tissue stained with TLR4 antibody (5 ug/ml).



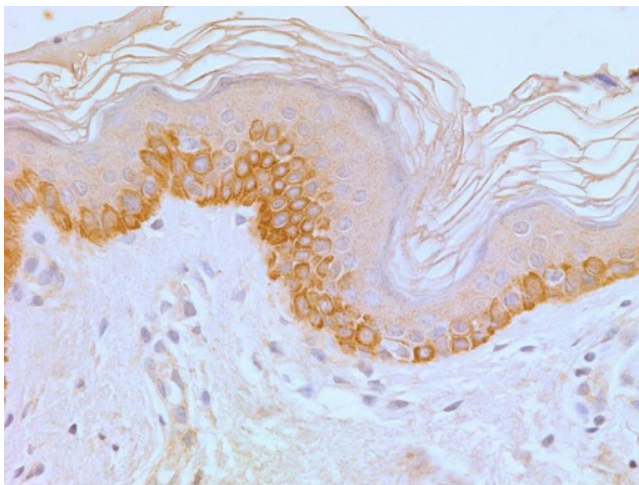
Immunohistochemistry-Paraffin: TLR4 Antibody (76B357.1) TA336410 - IHC analysis of formalin-fixed paraffin-embedded tissue section of human esophageal squamous cell carcinoma (SCC) using 5 ug/ml concentration of TLR4 antibody (clone 76B357.1). Membrane-



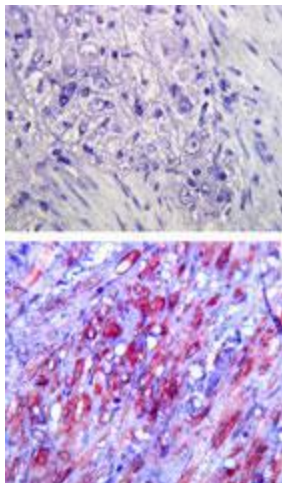
Immunohistochemistry-Paraffin: TLR4 Antibody (76B357.1) TA336410 - IHC analysis of formalin-fixed paraffin-embedded tissue section of malignant stromal tumor of small intestine from human using 5 ug/ml concentration of TLR4 antibody (clone 76B357.1). Th



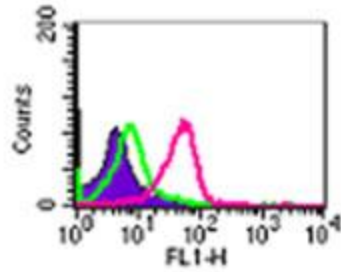
Immunohistochemistry-Paraffin: TLR4 Antibody (76B357.1) TA336410 - IHC analysis of formalin-fixed paraffin-embedded tissue section of normal human breast using 5 ug/ml concentration of TLR4 antibody (clone 76B357.1). The ductal/acinar epithelial cells a



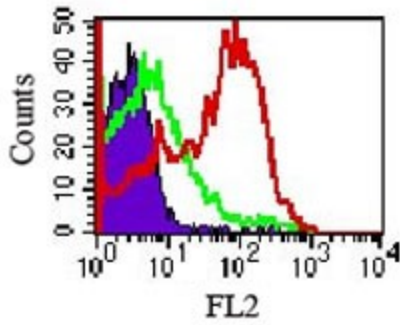
Immunohistochemistry-Paraffin: TLR4 Antibody (76B357.1) TA336410 - IHC analysis of formalin-fixed paraffin-embedded tissue section of normal human skin using 5 ug/ml concentration of TLR4 antibody (clone 76B357.1). Membrane-cytoplasmic immunopositivity



Immunohistochemistry-Paraffin: TLR4 Antibody (76B357.1) TA336410 - Immunohistochemical analysis of TLR4 in paraffin-embedded formalin-fixed human colon tissue using an isotype control (top) and TA336410 (bottom) at 5 ug/ml.



Flow Cytometry: TLR4 Antibody (76B357.1) TA336410 - Flow analysis of TLR4 in 10^6 ThP1 cells using 5 ug. Shaded histogram shows ThP1 cells without anti-TLR4 antibody; green represents isotype control; red represents anti-TLR4 antibody.



Flow Cytometry: TLR4 Antibody (76B357.1) TA336410 - Surface staining of mouse splenocytes using TLR4 antibody (0.5 ug/ 10^6 cells) and a PE-conjugated secondary this antibody. Shaded histogram represents cells without TLR4 antibody; green represents iso