

## Product datasheet for TA336406

### MITF Mouse Monoclonal Antibody [Clone ID: 21D1418]

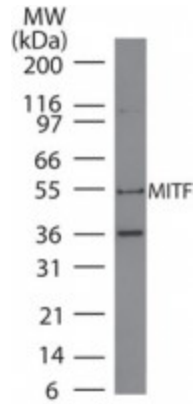
#### Product data:

Product Type:	Primary Antibodies
Clone Name:	21D1418
Applications:	WB
Recommend Dilution:	WB: 0.1-5ug/ml
Reactivity:	Human, Mouse, Rat
Host:	Mouse
Isotype:	IgG1
Clonality:	Monoclonal
Immunogen:	A synthetic peptide mapping to the 400-450 a.a. region of accession number O75030.
Formulation:	PBS containing 0.05% BSA, 0.05% Sodium Azide. Store at 4C short term. Aliquot and store at -20C long term. Avoid freeze-thaw cycles.
Concentration:	0.5 mg/ml
Purification:	Protein G purified
Gene Name:	melanogenesis associated transcription factor
Database Link:	<a href="#">NP_937821</a> <a href="#">Entrez Gene 17342</a> <a href="#">MouseEntrez Gene 25094</a> <a href="#">RatEntrez Gene 4286</a> <a href="#">Human</a>
Background:	Microphthalmia-associated bHLH-LZ transcription factor (Mitf) is a positively acting transcription factor containing a transcription activation domain and a bHLH-LZ domain that mediates DNA-binding and dimerization. Both the transcription activation and bHLH-LZ domains are highly conserved in the closely related TFE3, TFEB and TFEC transcription factors. Mitf can form heterodimers in vitro with the above transcription factors, but not with other bHLH-LZ factors such as Myc, Max or USF. Mitf is expressed as multiple isoforms, which share common transcription activation and DNA-binding domains, but differ in the amino-terminal region. Mitf is targeted by three kinases: GSK-3beta, Map kinase ERK2 and members of the p90 Rsk family of kinases.
Synonyms:	bHLHe32; CMM8; MI; WS2; WS2A
Protein Families:	Druggable Genome, Transcription Factors
Protein Pathways:	Melanogenesis, Melanoma, Pathways in cancer

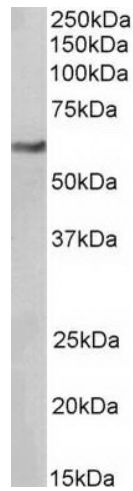


[View online »](#)

Product images:



Western Blot: MiTF Antibody (21D1418) TA336406 - Analysis of A375 lysate using MITF antibody at 4 ug/ml.



Western Blot: MiTF Antibody (21D1418) TA336406 - Western blot analysis of HeLa lysate (35ug per lane, RIPA buffer) using MiTF antibody (TA336406) at 0.1ug/ml. Band detected at ~60kDa. (Expected MW of 58.2kDa according to NP\_937802.1).