

Product datasheet for **TA336403**

TEM7 (PLXDC1) Mouse Monoclonal Antibody [Clone ID: 197C193 (IM193)]

Product data:

Product Type:	Primary Antibodies
Clone Name:	197C193 (IM193)
Applications:	IHC, WB
Recommend Dilution:	WB: 1-3 ug/ml, IF: 1:10-1:500, IHC: 1:10-1:500, IHC-F: 1:10-1:500, IHC-P: 2 - 5 ug/ml, IP: 1:10-1:500
Reactivity:	Human, Mouse, Rat
Host:	Mouse
Isotype:	IgG1
Clonality:	Monoclonal
Immunogen:	Amino acids 409-425 (LQNNLSPKTKGTPVHLG) of human TEM7 were used to develop this monoclonal antibody.
Formulation:	PBS containing 0.05% BSA, 0.05% Sodium Azide. Store at 4C short term. Aliquot and store at -20C long term. Avoid freeze-thaw cycles.
Concentration:	0.5 mg/ml
Purification:	Protein G purified
Gene Name:	plexin domain containing 1
Database Link:	NP_065138 Entrez Gene 72324 Mouse Entrez Gene 303505 Rat Entrez Gene 57125 Human
Background:	Recently, using SAGE (Serial Analysis of Gene Expression) technology, St. Croix et al, have identified 46 genes, whose expression is specifically elevated in tumor-associated endothelium. Nine of these genes were prominently expressed only in tumor endothelial cells (EC), but were absent or barely detectable in normal ECs, and named as Tumor Endothelial Markers (TEMs, TEM 1-9). TEM7 (Tumor endothelial marker 7) transcripts are specifically expressed in the endothelium of colorectal cancer, primary cancers of lung, pancreas, breast, and brain. TEM7 is expressed specifically in endothelium of these cancers, whether primary or metastasis. The other six members of this family (TEM1, 3, 4, 5, 8, and 9) also show similar expression pattern in lung and brain tumors, and liver metastasis. Since most of the genes expressed differentially in tumor endothelium are also expressed during angiogenesis, these newly discovered genes might provide important resources for basic and clinical studies of human angiogenesis.



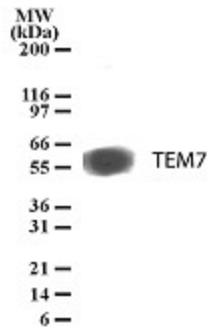
[View online »](#)

Synonyms: TEM3; TEM7

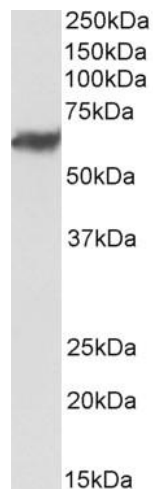
Note: Immunocytochemistry/Immunofluorescence: see Meng et al, 2007. Immunohistochemistry (frozen): see Lee et al, 2006. Immunohistochemistry (paraffin): 2-5 ug/ml; see Nanda et al, 2004 and Lee et al, 2005. Immunoprecipitation: see Nanda et al, 2004.

Protein Families: Druggable Genome, Secreted Protein, Transmembrane

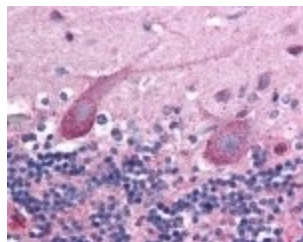
Product images:



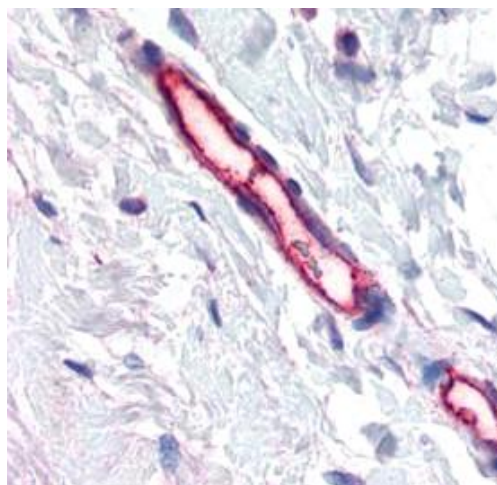
Western Blot: TEM7 Antibody (197C193 (IM193)) TA336403 - detection of TEM7 with TEM7 antibody. Human HCT-116 cell lysate probed with TEM7 antibody at 1 ug/ml.



Western Blot: TEM7 Antibody (197C193 (IM193)) TA336403 - Western blot analysis of human breast cancer lysate (35 ug per lane, RIPA buffer) using TEM7 antibody (TA336403) at 0.03ug/ml. Band observed at ~60kDa. (Expected MW of 55.8kDa according to NP_0651)



Immunohistochemistry: TEM7 Antibody (197C193 (IM193)) TA336403 - Immunohistochemical staining of Tumor Endothelial Marker 7 in formalin-fixed, paraffin-embedded human Purkinje neurons at 2.5 ug/ml. Hematoxylin-eosin counterstain.



Immunohistochemistry-Paraffin: TEM7 Antibody (197C193 (IM193)) TA336403 - Formalin-fixed, paraffin-embedded human breast vessel stained with TEM7 antibody at 5 ug/ml.