

Product datasheet for **TA336397**

IL17E (IL25) Mouse Monoclonal Antibody [Clone ID: 68C1039.2]

Product data:

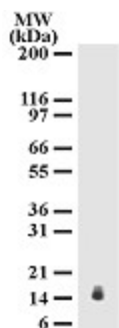
Product Type:	Primary Antibodies
Clone Name:	68C1039.2
Applications:	IHC, WB
Recommend Dilution:	WB: 2-4 ug/ml, IHC: 1:10-1:500, IHC-P: 1:10-1:500
Reactivity:	Human, Mouse
Host:	Mouse
Isotype:	IgG1
Clonality:	Monoclonal
Immunogen:	Amino acids 115-132 of human IL-17E (isoform CRA_a) were used as immunogen for this antibody.
Formulation:	PBS containing 0.05% BSA, 0.05% Sodium Azide. Store at 4C short term. Aliquot and store at -20C long term. Avoid freeze-thaw cycles.
Concentration:	0.5 mg/ml
Purification:	Protein G purified
Predicted Protein Size:	20 kDa
Gene Name:	interleukin 25
Database Link:	NP_758525 Entrez Gene 140806 MouseEntrez Gene 64806 Human
Background:	A number of cytokines belonging to the interleukin (IL)-17 family have been identified, termed IL-17A-F. IL-17 is a potent proinflammatory cytokine that plays roles in a number of diseases including rheumatoid arthritis, multiple sclerosis, and promotion of tumor growth. IL-17E, C, and B are able to induce proinflammatory responses. However, they do not bind to the IL-17 receptor suggesting that an additional IL-17R related receptor may exist. Receptors for IL-17B and IL-17E have been independently isolated by Shi, et al and Lee, et al. and have been designated as EV127 (in mouse) and IL-17Rh1 (in human), respectively. IL-17E, also called IL-25, induces activation of NF-kB pathway and like IL-17 also induces production of IL-8.
Synonyms:	IL17E
Note:	IHC-Paraffin reported in literature (see Terrier B, et al).
Protein Families:	Druggable Genome, Secreted Protein, Transmembrane



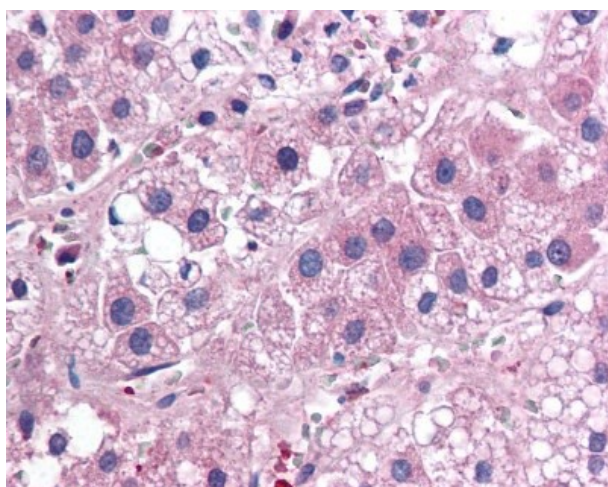
[View online »](#)

Protein Pathways: Cytokine-cytokine receptor interaction

Product images:



Western Blot: IL17E Antibody (68C1039.2) TA336397 - Analysis of IL-17E using IL-17E monoclonal antibody. Mouse testis lysate probed with IL-17E antibody at 2 ug/ml.



Immunohistochemistry: IL17E Antibody (68C1039.2) TA336397 - Adrenal cortex, Human: Formalin-Fixed Paraffin-Embedded (FFPE)