

Product datasheet for **TA336378**

IKK beta (IKKB) Mouse Monoclonal Antibody [Clone ID: 10A9B6]

Product data:

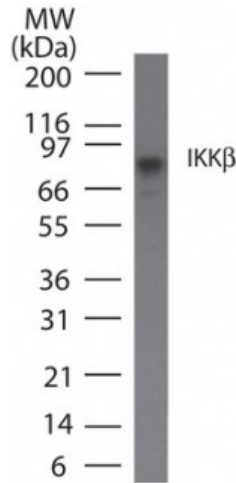
Product Type:	Primary Antibodies
Clone Name:	10A9B6
Applications:	WB
Recommend Dilution:	WB: 2-5 ug/ml, FC: 1:10-1:1000, IP: 2-5 ug/ 10 ⁶ cells
Reactivity:	Human, Mouse
Host:	Mouse
Isotype:	IgG1, kappa
Clonality:	Monoclonal
Immunogen:	Full-length human IKKb/IKK2 recombinant protein was used as immunogen (NP_001547).
Formulation:	PBS containing 0.05% BSA, 0.05% Sodium Azide. Store at 4C short term. Aliquot and store at -20C long term. Avoid freeze-thaw cycles.
Concentration:	0.5 mg/ml
Purification:	Protein G purified
Gene Name:	inhibitor of kappa light polypeptide gene enhancer in B-cells, kinase beta
Database Link:	NP_001547 Entrez Gene 16150 MouseEntrez Gene 3551 Human
Background:	NF- κ B (nuclear factor κ B) is sequestered in the cytoplasm by I κ B family of inhibitory proteins that mask the nuclear localization signal of NF- κ B thereby preventing translocation of NF- κ B to the nucleus. External stimuli such as tumor necrosis factor or other cytokines results in phosphorylation and degradation of I κ B releasing NF- κ B dimers. NF- κ B dimer subsequently translocates to the nucleus and activates target genes. Synthesis of I κ Ba is autoregulated. I κ B proteins are phosphorylated by I κ B kinase complex consisting of at least three proteins, IKK1/a, IKK2/b, and IKK3/g. IKK1/a and IKK2/b are phosphorylated by NF- κ B-inducing kinase (NIK) and MAP kinase kinase kinase-1 (MEKK1), respectively. Recent studies have shown that IKK2/b, not IKK1/a, is the target proinflammatory stimuli. Targeted disruption of IKK2/b gene in mice also results in extensive liver damage from apoptosis and death as embryo.
Synonyms:	IKK-beta; IKK2; IKKB; IMD15; NFKB1KB
Protein Families:	Druggable Genome, Protein Kinase, Transcription Factors



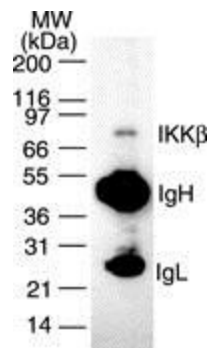
[View online »](#)

Protein Pathways:

Acute myeloid leukemia, Adipocytokine signaling pathway, Apoptosis, B cell receptor signaling pathway, Chemokine signaling pathway, Chronic myeloid leukemia, Cytosolic DNA-sensing pathway, Epithelial cell signaling in Helicobacter pylori infection, Insulin signaling pathway, MAPK signaling pathway, Neurotrophin signaling pathway, NOD-like receptor signaling pathway, Pancreatic cancer, Pathways in cancer, Prostate cancer, RIG-I-like receptor signaling pathway, Small cell lung cancer, T cell receptor signaling pathway, Toll-like receptor signaling pathway, Type II diabetes mellitus

Product images:


Western Blot: IKK beta Antibody (10A9B6) TA336378 - analysis of IKK beta in Daudi cell lysate using IKK beta antibody at 5 ug/ml.



Western Blot: IKK beta Antibody (10A9B6) TA336378 - TA336378 was used to immunoprecipitate IKKb from 1×10^6 Daudi cells and the immuno-precipitated protein was detected by western blotting using NB100-56509. IKKb was detected as a protein of ~87 kD.