

## Product datasheet for TA336369

### Cytochrome C (CYCS) Mouse Monoclonal Antibody [Clone ID: 7H8.2C12]

#### Product data:

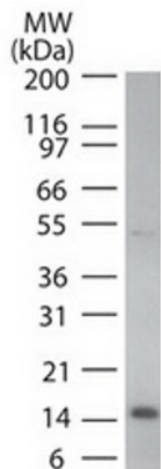
Product Type:	Primary Antibodies
Clone Name:	7H8.2C12
Applications:	WB
Recommend Dilution:	WB: 0.05-0.5 ug/ml, FC: 1:10-1:1000, IF: 1:10-1:500, IHC: 1:10-1:500, IHC-P: 1:10-1:500
Reactivity:	Canine, Drosophila, Equine, Human, Mammalian, Mouse
Host:	Mouse
Isotype:	IgG2b, kappa
Clonality:	Monoclonal
Immunogen:	Synthetic peptides corresponding to amino acids 1-80, 81-104 and 66-104 of pigeon CYT were used as the immunogen (Jemmerson et al. 1991). The antibody recognizes an epitope within amino acids 93-104 of pigeon cytochrome C based on competitive ELISA result
Formulation:	PBS containing 0.05% BSA, 0.05% Sodium Azide. Store at 4C short term. Aliquot and store at -20C long term. Avoid freeze-thaw cycles.
Concentration:	0.5 mg/ml
Purification:	Protein G purified
Gene Name:	cytochrome c, somatic
Database Link:	<a href="#">NP_061820 Entrez Gene 13063 Mouse</a> <a href="#">Entrez Gene 54205 Human</a>
Background:	In addition to its well-known role in electron transport, cytochrome c (CYT) has been identified as a mediator of apoptosis or programmed cell death. Cytochrome c translocates from mitochondria into the cytoplasm in the early phases of apoptosis and plays a role in initiation of the apoptotic proteolytic cascade by activating caspase-3. Cytochrome c has been shown to bind Apaf-1. Apaf-1 has also been shown to activate caspase-3.
Synonyms:	CYC; HCS; THC4
Note:	Useful in Flow Cytometry (Intracellular): See Mohr (2004) et al. Immunocytochemistry/Immunofluorescence: See Yamasaki (2006) et al. Immunohistochemistry-Paraffin: See Fujimara (1998). et al.
Protein Families:	Druggable Genome



[View online »](#)

**Protein Pathways:**

Alzheimer's disease, Amyotrophic lateral sclerosis (ALS), Apoptosis, Colorectal cancer, Huntington's disease, p53 signaling pathway, Parkinson's disease, Pathways in cancer, Small cell lung cancer, Viral myocarditis

**Product images:**

Western Blot: Cytochrome C Antibody (7H8.2C12) TA336369 - Analysis using cytochrome C antibody. Human HeLa lysate probed with cytochrome C antibody at 0.1 ug/ml.