

Product datasheet for TA336271

Chk1 (CHEK1) Mouse Monoclonal Antibody [Clone ID: 2G1D5]

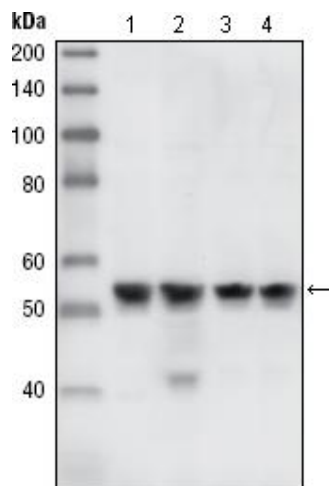
Product data:

Product Type:	Primary Antibodies
Clone Name:	2G1D5
Applications:	IF, WB
Recommend Dilution:	WB: 1:200-1:1000, IF: 1:10-1:500, IHC: 1:10-1:500, IHC-P: 1:10-1:500
Reactivity:	Human
Host:	Mouse
Isotype:	IgG1
Clonality:	Monoclonal
Immunogen:	Purified recombinant fragment of Chk1 expressed in E. coli. [UniProt# O14757]
Formulation:	PBS containing 0.05% BSA, 0.05% Sodium Azide. Store at 4C short term. Aliquot and store at -20C long term. Avoid freeze-thaw cycles.
Concentration:	1 mg/ml
Purification:	Protein G purified
Predicted Protein Size:	56 kDa
Gene Name:	checkpoint kinase 1
Database Link:	NP_001265 Entrez Gene 1111 Human
Background:	Chk1, also known as CHEK1, it is a kinase that phosphorylates cdc25, an important phosphatase in cell cycle control, particularly for entry into mitosis. Cdc25, when phosphorylated on serine 216 by Chk1 becomes bound by an adaptor protein in the cytoplasm. Therefore it is inhibited from removing the inhibiting phosphate from MPF (mitotic/maturation promoting factor) added by Wee1. Consequently, a cell is prevented from entering mitosis. Chk1 can also phosphorylate p53 at Ser20 in vitro.
Synonyms:	CHK1
Note:	This Chk1 (2G1D5) antibody is useful for Western blot and ELISA.
Protein Families:	Druggable Genome, Protein Kinase, Stem cell - Pluripotency
Protein Pathways:	Cell cycle, p53 signaling pathway

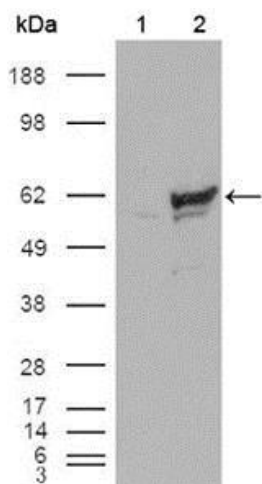


[View online »](#)

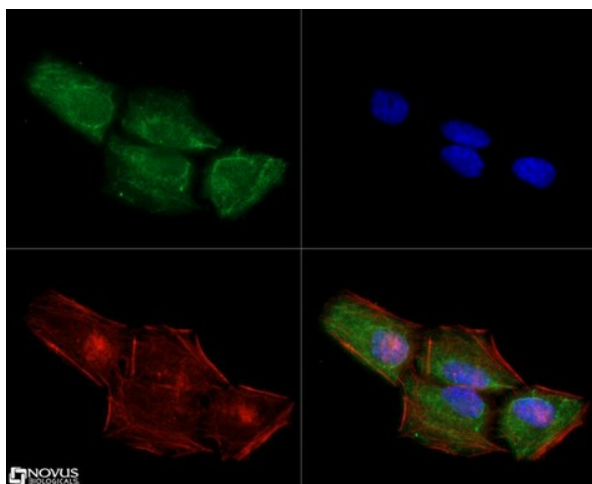
Product images:



Western Blot: Chk1 Antibody (2G1D5) TA336271 - WB analysis using anti-Chk1 mouse mAb against A431 (1), HeLa (2), NIH/3T3 (3) and K562 (4) cell lysates.



Western Blot: Chk1 Antibody (2G1D5) TA336271 - Western blot analysis using Chk1 mouse mAb against HEK293T cells transfected with the pCMV6-ENTRY control (1) and pCMV6-ENTRY Chk1 cDNA (2).



Immunocytochemistry/Immunofluorescence: Chk1 Antibody (2G1D5) TA336271 - Chk1 antibody was tested at 1:10 in HeLa cells with Dylight 488 (green). Nuclei and alpha-tubulin were counterstained with DAPI (blue) and Dylight 550 (red). Image objective 40x.

