

Product datasheet for TA328012

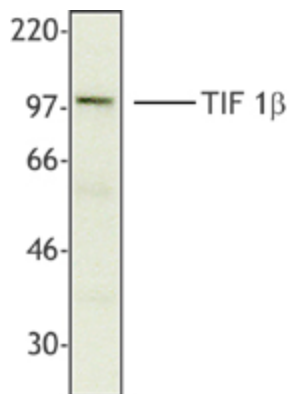
KAP1 (TRIM28) Mouse Monoclonal Antibody [Clone ID: 20A1]

Product data:

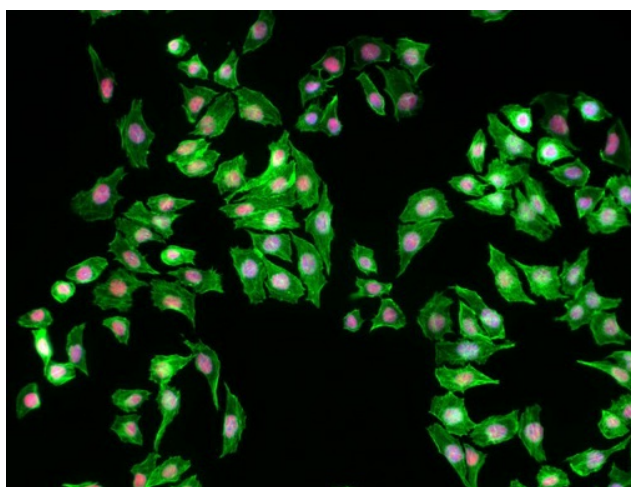
Product Type:	Primary Antibodies
Clone Name:	20A1
Applications:	IF, WB
Recommend Dilution:	WB, IF, CHIP
Reactivity:	Human
Host:	Mouse
Isotype:	IgG1, kappa
Clonality:	Monoclonal
Immunogen:	Not provided
Formulation:	This antibody is provided in phosphate-buffered solution, pH 7.2, containing 0.09% sodium azide at 0.5 mg/ml.
Concentration:	0.5 mg/ml
Purification:	The antibody was purified by affinity chromatography.
Predicted Protein Size:	110 kD
Gene Name:	tripartite motif containing 28
Database Link:	NP_005753 Entrez Gene 10155 Human
Background:	TIF β (transcription intermediary factor 1-beta) is an 88 kD member of the tripartite motif family. This protein contains three zinc binding domains, a RING domain, a B-box type 1 and type 2 domain, and a coiled-coil region. TIF β is found in the nucleus and associates with specific chromatin regions. This protein forms a complex with KRAB-domain transcription factors and recruits setdb1 to histone 3 to increase KRAB-mediated transcriptional repression. TIF1 β has been reported to interact with setdb1 and cbx3 proteins. Studies using knockout mice reveal the important function of TIF1 β in regulating genomic imprinting, T cell activation, and T cell tolerance.
Synonyms:	KAP1; PPP1R157; RNF96; TF1B; TIF1B
Protein Families:	Protein Kinase, Stem cell - Pluripotency, Transcription Factors



[View online »](#)

Product images:

HepG2 nuclear extract was resolved by electrophoresis, transferred to nitrocellulose and probed with monoclonal anti-TIF1β antibody. Proteins were visualized using a goat anti-mouse secondary conjugated to HRP and a chemiluminescence detection system.



HeLa cells were intracellularly stained with 5 ug/ml of purified anti-TIF1β (KAP-1, TRIM28) (clone 20A1) in blocking buffer overnight at 4°, followed by DyLight™ 594 anti-mouse IgG (red) and Alexa Fluor® 488 Phalloidin (green) staining for 20 minutes. Nuclei were counterstained with DAPI (blue). The image was captured with 20X objective.