

Product datasheet for TA327939

gamma Tubulin (TUBG1) Mouse Monoclonal Antibody [Clone ID: 14C11]

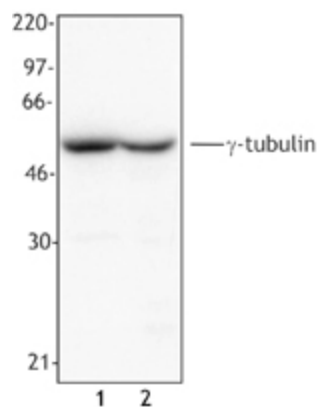
Product data:

Product Type:	Primary Antibodies
Clone Name:	14C11
Applications:	IF, WB
Recommend Dilution:	WB, IF
Reactivity:	Human, Mouse, Rat
Host:	Mouse
Isotype:	IgG2b, kappa
Clonality:	Monoclonal
Immunogen:	Peptide-KLH
Formulation:	This antibody is provided in phosphate-buffered solution, pH 7.2, containing 0.09% sodium azide at 0.5 mg/ml.
Concentration:	0.5 mg/ml
Purification:	The antibody was purified by affinity chromatography.
Predicted Protein Size:	51 kD
Gene Name:	tubulin gamma 1
Database Link:	NP_001061 Entrez Gene 103733 MouseEntrez Gene 252921 RatEntrez Gene 7283 Human
Background:	<p>γ-tubulin is a 51 kD member of the tubulin superfamily and is conserved between yeast and mammals. This cytoskeletal protein is highly expressed in centrosomes and is thought to be involved in cytoskeletal organization and mitosis. γ-tubulin is expressed at highest levels during prophase to metaphase and can be modified by phosphorylation. This protein has been shown to interact with α-tubulin, paxillin, and RAC GTPase activated protein 1.</p>
Synonyms:	CDCBM4; GCP-1; TUBG; TUBGCP1
Protein Families:	Druggable Genome

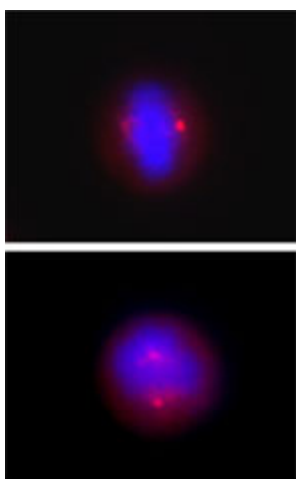


[View online »](#)

Product images:



Cell extract from A431 cells (Lane 1) or NIH3T3 cells (Lane 2) was resolved by electrophoresis, transferred to nitrocellulose and probed with monoclonal anti- γ -tubulin (Clone 14C11) antibody. Proteins were visualized using a goat anti-mouse secondary conjugated to HRP and a chemiluminescence detection system.



Overnight nocodazole treated HeLa cells stained with purified mouse monoclonal antibody against γ -Tubulin (clone 14C11) followed by Rhodamine Red-X conjugated donkey anti-mouse IgG and DAPI.