

## Product datasheet for TA327735

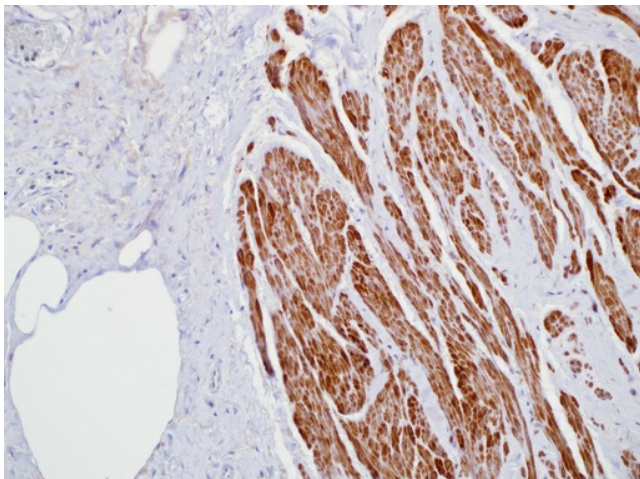
### Smoothelin (SMTN) Mouse Monoclonal Antibody [Clone ID: R4A]

#### Product data:

Product Type:	Primary Antibodies
Clone Name:	R4A
Applications:	IHC
Recommend Dilution:	IHC: 1:100 - 1:500
Reactivity:	Human
Host:	Mouse
Isotype:	IgG1
Clonality:	Monoclonal
Formulation:	The antibody is diluted in tris buffered saline, pH 7.3-7.7, with 1% BSA and <1% sodium azide.
Purification:	Affinity purification
Gene Name:	smoothelin
Database Link:	<a href="#">NP_001193946 Entrez Gene 6525 Human</a>
Synonyms:	FLJ35168; FLJ35365; FLJ35620; FLJ38597
Note:	<p>Smoothelin is a constituent of the smooth muscle cell cytoskeleton protein exclusively found in differentiated smooth muscle cells (SMC). Cells with SMC-like characteristics, such as myofibroblasts and myoepithelial cells, as well as skeletal and cardiac muscle do not contain smoothelin. Distinguishing between bladder muscularis mucosae (MM) and muscularis propria (MP) muscle bundles is crucial for accurate staging of bladder carcinoma. Strong smoothelin expression is nearly exclusively observed in muscularis propria. The staining pattern of MP (strongly positive) and MM (negative or weakly positive) makes this technique an attractive diagnostic tool for the sometimes difficult task of staging bladder urothelial carcinoma, such as in transurethral resection specimens of urinary bladder tumors. Differentiating between smooth muscle tumors and other mesenchymal neoplasms of the GI tract can be challenging in small biopsies. Anti-smoothelin immunostaining can be helpful in differentiating benign (+) from malignant smooth muscle tumors (-), and other mimics(-).</p>



[View online »](#)

**Product images:**

Immunohistochemistry staining of Paraffin Bladder, leiomyoma tissue by Smoothelin antibody (dilution: 1:100 - 1:500; visualization of staining: Cytoplasmic, nuclear)