

Product datasheet for TA327730

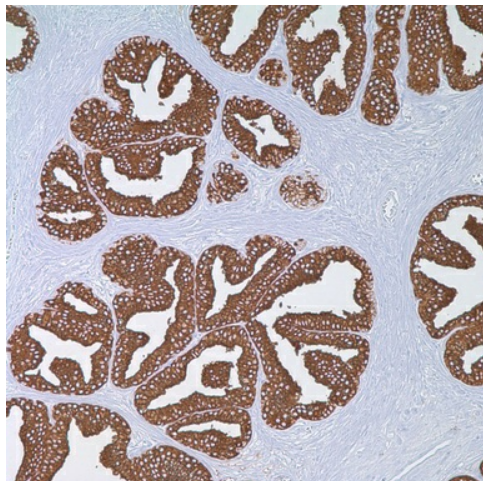
PSAP Mouse Monoclonal Antibody [Clone ID: PASE/4LJ]

Product data:

Product Type:	Primary Antibodies
Clone Name:	PASE/4LJ
Applications:	IHC
Recommend Dilution:	IHC: 1:25 - 1:100
Reactivity:	Human
Host:	Mouse
Isotype:	IgG1
Clonality:	Monoclonal
Formulation:	The antibody is diluted in tris buffered saline, pH 7.3-7.7, with 1% BSA and <1% sodium azide.
Purification:	Affinity purification
Gene Name:	prosaposin
Database Link:	NP_001035930 Entrez Gene 5660 Human
Synonyms:	GLBA; SAP1
Note:	Anti-PSAP reacts with prostatic acid phosphatase in the glandular epithelium of normal and hyperplastic prostate, carcinoma of the prostate, and metastatic cells of prostatic carcinoma. This marker may be helpful in pinpointing the site of origin in cases of metastatic carcinoma of the prostate, and is considered a more sensitive marker than PSA. However, it also offers less specificity. Nevertheless, PSAP complements PSA in the right clinical context.
Protein Families:	Druggable Genome
Protein Pathways:	Lysosome



[View online »](#)

Product images:

Immunohistochemistry staining of Paraffin Prostate tissue by PSAP antibody (dilution: 1:25 - 1:100; visualization of staining: Cytoplasmic)