

Product datasheet for TA327691

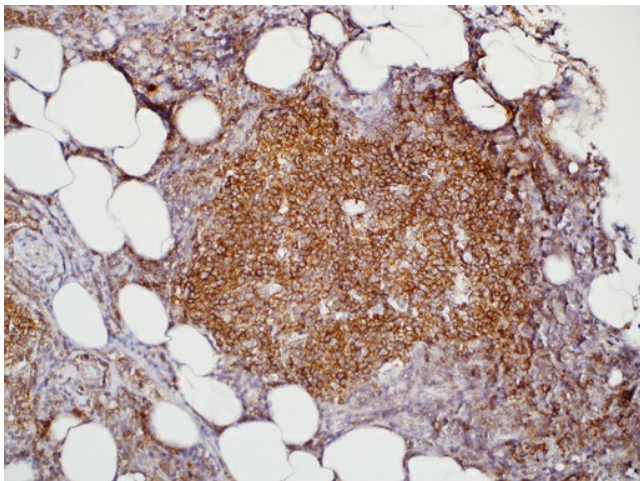
GCET2 (GCSAM) Mouse Monoclonal Antibody [Clone ID: MRQ-49]

Product data:

Product Type:	Primary Antibodies
Clone Name:	MRQ-49
Applications:	IHC
Recommend Dilution:	IHC: 1:100 - 1:500
Reactivity:	Human
Host:	Mouse
Isotype:	IgG2a, kappa
Clonality:	Monoclonal
Formulation:	The antibody is diluted in tris buffered saline, pH 7.3-7.7, with 1% BSA and <1% sodium azide.
Purification:	Affinity purification
Gene Name:	germinal center associated signaling and motility
Database Link:	NP_001177188 Entrez Gene 257144 Human
Synonyms:	GCAT2; GCET2; HGAL
Note:	Human germinal center-associated lymphoma (HGAL) protein is specifically expressed in the cytoplasm of germinal center B-cells, but is absent in mantle and marginal zone B-cells and in the interfollicular and paracortical regions in normal tonsils and lymph nodes. Its high degree of specificity for germinal center B-cells makes anti-HGAL an ideal marker for the detection of germinal center-derived B-cell lymphomas. Anti-HGAL has the highest overall sensitivity of detecting follicular lymphoma (FL) and in detecting the interfollicular and diffuse components of FL compared with antibodies against BCL2, LMO2, CD10, and BCL6. The addition of anti-HGAL to the immunohistochemical panel is beneficial in the work-up of nodal and extranodal B-cell lymphomas and the efficacy of anti-HGAL in detecting the follicular, interfollicular, and diffuse components of FL is of particular value in the setting of variant immunoarchitectural patterns.



[View online »](#)

Product images:

Immunohistochemistry staining of Paraffin Tonsil, lymph node tissue by HGAL antibody (dilution: 1:100 - 1:500; visualization of staining: Cytoplasmic)