

## Product datasheet for TA327627

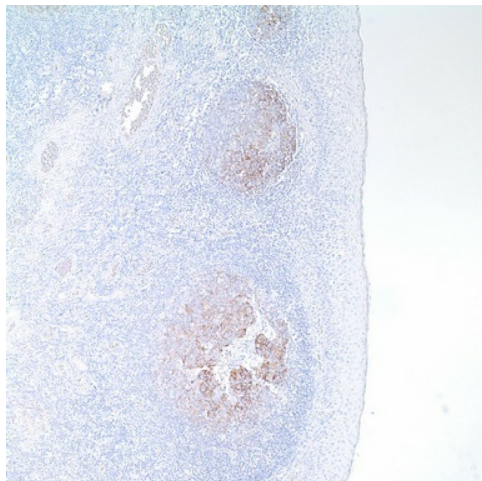
### CD21 (CR2) Mouse Monoclonal Antibody [Clone ID: 2G9]

#### Product data:

Product Type:	Primary Antibodies
Clone Name:	2G9
Applications:	IHC
Recommend Dilution:	IHC: 1:25 - 1:100
Reactivity:	Human
Host:	Mouse
Isotype:	IgG2a
Clonality:	Monoclonal
Formulation:	The antibody is diluted in tris buffered saline, pH 7.3-7.7, with 1% BSA and <1% sodium azide.
Purification:	Affinity purification
Gene Name:	complement component 3d receptor 2
Database Link:	<a href="#">NP_001006659 Entrez Gene 1380 Human</a>
Synonyms:	C3DR; CD21; CR; CVID7; SLEB9
Note:	CD21 (also known as complement receptor 2 (CR2), C3d receptor, or EBV receptor) is a 140 kDa membrane protein on B-lymphocytes to which the Epstein-Barr virus (EBV) binds during infection of these cells. The antigen is absent on T-lymphocytes, monocytes, and granulocytes. Anti-CD21 is useful in the identification of follicular dendritic cell matrix found in normal lymph node and tonsillar tissue. This antibody also labels follicular dendritic cell sarcomas. Anti-CD21 is valuable in differentiating follicular lymphoma with marginal zone differentiation from marginal zone lymphoma with follicular involvement. It also plays a role in separating among nodular lymphocyte predominant Hodgkin lymphoma, lymphocyte-rich classic Hodgkin lymphoma, and T-cell/histiocyte-rich B-cell lymphoma in combination with other B-cell and T-cell markers.
Protein Families:	Druggable Genome, Transmembrane
Protein Pathways:	B cell receptor signaling pathway, Complement and coagulation cascades, Hematopoietic cell lineage



[View online »](#)

**Product images:**

Immunohistochemistry staining of Paraffin Tonsil tissue by CD21 antibody (dilution: 1:25 - 1:100; visualization of staining: Membranous)