

## Product datasheet for **TA326424**

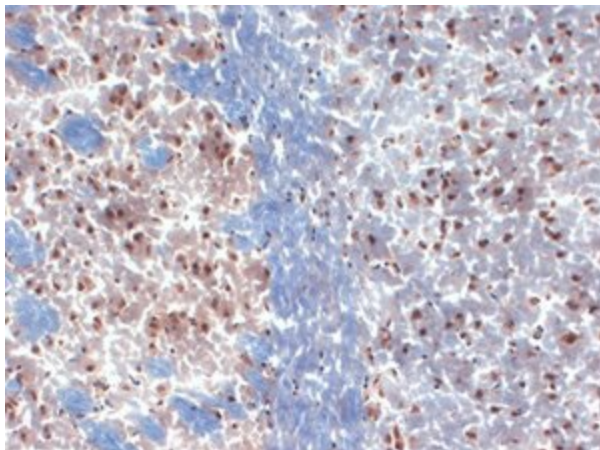
### **KCNA3 Mouse Monoclonal Antibody [Clone ID: S23-27]**

#### **Product data:**

|                            |   |
|----------------------------|---|
| <b>Product Type:</b>       | Primary Antibodies  |
| <b>Clone Name:</b>         | S23-27  |
| <b>Applications:</b>       | IHC   |
| <b>Recommend Dilution:</b> | WB: 1ug/ml, IHC: 0.1-1ug/ml, IF: 1-10ug/ml  |
| <b>Reactivity:</b>         | Human, Mouse, Rat   |
| <b>Host:</b>               | Mouse   |
| <b>Isotype:</b>            | IgG2a   |
| <b>Clonality:</b>          | Monoclonal  |
| <b>Immunogen:</b>          | Synthetic peptide amino acids 485- 506 (Cytoplasmic C-terminus) of rat Kv1.3 (GGMNHSAFPQTPFKTGNSYATC)   |
| <b>Formulation:</b>        | PBS pH7.4, 50% glycerol, 0.09% sodium azide   |
| <b>Concentration:</b>      | 1 mg/ml   |
| <b>Purification:</b>       | Protein G Purified  |
| <b>Gene Name:</b>          | potassium voltage-gated channel subfamily A member 3  |
| <b>Database Link:</b>      | <a href="#">NP_002223 Entrez Gene 16491 Mouse</a> <a href="#">Entrez Gene 29731 Rat</a> <a href="#">Entrez Gene 3738 Human</a>  |
| <b>Background:</b>         | Voltage gated channels are tetramers composed of four alpha-subunits arranged around a central pole. Each alphasubunit consists of six transmembrane segments with cytoplasmic NH2 and COOH-termini. Members of the KV1-4 subfamilies generate functional K <sup>+</sup> channels in a homotetrameric configuration . |
| <b>Synonyms:</b>           | HGK5; HLK3; HPCN3; HUKIII; KV1.3; MK3; PCN3   |
| <b>Note:</b>               | Detects ~70kDa.   |
| <b>Protein Families:</b>   | Druggable Genome, Ion Channels: Potassium, Transmembrane  |



[View online »](#)

**Product images:**

IHC analysis of Kv1.3 in frozen sections of mouse brain extract using the antibody