

## Product datasheet for TA326422

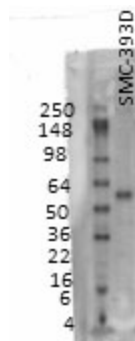
### Vesicular Acetylcholine Transporter (SLC18A3) Mouse Monoclonal Antibody [Clone ID: S6-38]

#### Product data:

Product Type:	Primary Antibodies
Clone Name:	S6-38
Applications:	WB
Recommend Dilution:	IHC: 1:50-1:200
Reactivity:	Human, Mouse, Rat
Host:	Mouse
Isotype:	IgG1
Clonality:	Monoclonal
Immunogen:	Synthetic peptide amino acids 521-532 of human VACht
Formulation:	PBS pH7.4, 50% glycerol, 0.09% sodium azide.
Concentration:	1 mg/ml
Purification:	Protein G Purified
Gene Name:	solute carrier family 18 member A3
Database Link:	<a href="#">NP_003046 Entrez Gene 20508 Mouse</a> <a href="#">Entrez Gene 60422 Rat</a> <a href="#">Entrez Gene 6572 Human</a>
Background:	VACht is a member of the vesicular amine transporter (VMAT) family. The encoded transmembrane protein transports acetylcholine into secretory vesicle for release into the extracellular space. Acetylcholine (ACh) transport utilizes a proton gradient established by a vacuolar ATPase. This gene is located within the first intron of the choline acetyltransferase gene.
Synonyms:	VACHT
Note:	No known cross-over to other proteins
Protein Families:	Druggable Genome, Transmembrane



[View online »](#)

**Product images:**

Western blot analysis of VACHT on rat membrane tissues using a 1:1000 dilution of the antibody