

Product datasheet for **TA326381**

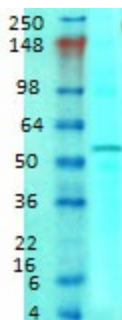
EAAT3 (SLC1A1) Mouse Monoclonal Antibody [Clone ID: S180-41]

Product data:

Product Type:	Primary Antibodies
Clone Name:	S180-41
Applications:	WB
Reactivity:	Human
Host:	Mouse
Isotype:	IgG1
Clonality:	Monoclonal
Immunogen:	Fusion protein amino acids 1-524 (full length) of human EAAC1
Formulation:	PBS pH7.4, 50% glycerol
Concentration:	1 mg/ml
Purification:	Protein G Purified
Gene Name:	solute carrier family 1 member 1
Database Link:	NP_004161 Entrez Gene 6505 Human
Background:	SLC1A1/EAAT3/EAAC1, a member of this transporter family, is expressed throughout the body, particularly in brain, intestine, liver, heart and kidney. Functional defects of the SLC1A1 gene are found in patients of dicarboxylicamino aciduria.
Synonyms:	DCBXA; EAAC1; EAAT3; SCZD18
Note:	Detects ~60kDa.
Protein Families:	Druggable Genome, Transmembrane



[View online »](#)

Product images:

Western blot analysis of EAAC1 in rat brain membrane tissues, using a 1:1000 dilution of the antibody