

## Product datasheet for TA325139

### ERK1 (MAPK3) Mouse Monoclonal Antibody [Clone ID: 784CT7.6.3]

#### Product data:

Product Type:	Primary Antibodies
Clone Name:	784CT7.6.3
Applications:	WB
Recommend Dilution:	WB: 1:1000
Reactivity:	Human, Mouse
Host:	Mouse
Isotype:	IgG2a
Clonality:	Monoclonal
Immunogen:	Purified His-tagged Erk1/2 protein was used to produced this monoclonal antibody.
Formulation:	Purified monoclonal antibody supplied in PBS with 0.09% (W/V) sodium azide.
Concentration:	0.36 mg/ml
Purification:	This antibody is purified through a protein G column, followed by dialysis against PBS.
Predicted Protein Size:	43136 Da
Gene Name:	mitogen-activated protein kinase 3
Database Link:	<a href="#">NP_001035145</a> <a href="#">Entrez Gene 26417 Mouse</a> <a href="#">Entrez Gene 5595 Human</a>
Synonyms:	ERK-1; ERK1; ERT2; HS44KDAP; HUMKER1A; p44-ERK1; p44-MAPK; P44ERK1; P44MAPK; PRKM3
Protein Families:	Druggable Genome, ES Cell Differentiation/IPS, Protein Kinase

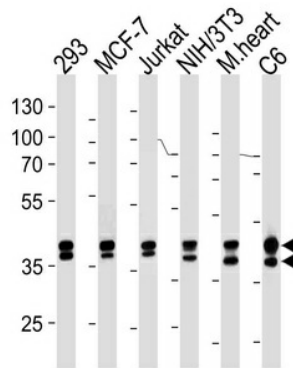


[View online »](#)

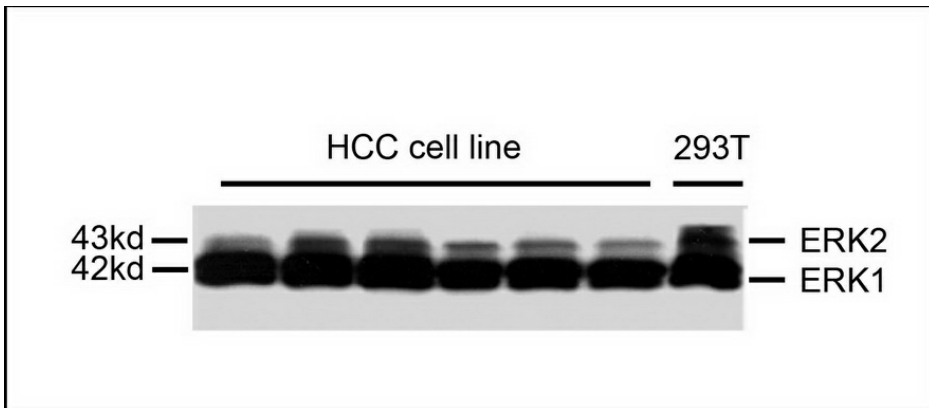
**Protein Pathways:**

Acute myeloid leukemia, Adherens junction, Alzheimer's disease, Axon guidance, B cell receptor signaling pathway, Bladder cancer, Chemokine signaling pathway, Chronic myeloid leukemia, Colorectal cancer, Dorso-ventral axis formation, Endometrial cancer, ErbB signaling pathway, Fc epsilon RI signaling pathway, Fc gamma R-mediated phagocytosis, Focal adhesion, Gap junction, Glioma, GnRH signaling pathway, Insulin signaling pathway, Long-term depression, Long-term potentiation, MAPK signaling pathway, Melanogenesis, Melanoma, mTOR signaling pathway, Natural killer cell mediated cytotoxicity, Neurotrophin signaling pathway, NOD-like receptor signaling pathway, Non-small cell lung cancer, Oocyte meiosis, Pancreatic cancer, Pathways in cancer, Prion diseases, Progesterone-mediated oocyte maturation, Prostate cancer, Regulation of actin cytoskeleton, Renal cell carcinoma, T cell receptor signaling pathway, TGF-beta signaling pathway, Thyroid cancer, Toll-like receptor signaling pathway, Type II diabetes mellitus, Vascular smooth muscle contraction, VEGF signaling pathway

**Product images:**



Erk1/2 Antibody (Cat. #TA325139) western blot analysis in 293, MCF-7, Jurkat, mouse NIH/3T3, rat C6 cell line and mouse heart lysates (35ug/lane). This demonstrates the Erk1/2 antibody detected the Erk1/2 protein (arrow).



Western blot analysis of extracts from HCC cell line and 293T cells, using mouse monoclonal antibody Erk1/2 Antibody (Cat. #TA325139).