

Product datasheet for TA320245

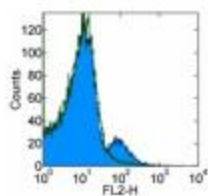
CD1 (CD1D) Mouse Monoclonal Antibody [Clone ID: 51.1]

Product data:

Product Type:	Primary Antibodies
Clone Name:	51.1
Applications:	FC
Recommend Dilution:	Flow, IHC, IP
Reactivity:	Human
Host:	Mouse
Clonality:	Monoclonal
Formulation:	Aqueous buffer, 0.09% sodium azide, may contain carrier protein/stabilizer
Concentration:	0.5-1mg/ml (lot dependent)
Purification:	Affinity purified
Gene Name:	CD1d molecule
Database Link:	NP_001757 Entrez Gene 912 Human
Background:	The monoclonal antibody 51.1 reacts with human CD1d, a member of the CD1 family with similarity to the non-polymorphic MHC Class I-like molecules. CD1d is a highly conserved single transmembrane receptor of the Immunoglobulin Superfamily. CD1d can associate with beta-microglobulin another feature showing similarity to MHC class I molecules, but can also exist as a nonglycosylated protein not in association with beta microglobulin. This suggests different control mechanisms for presenting glycolipid containing molecules to CD1d reactive NKT cells. Expression of CD1d is found on B cells of the periphery, in resting monocytes and cortical thymocytes. On intestinal epithelial cells (IEC) expression is polarized. Expression can also be found at low levels intracellularly in hepatocytes. In HCV (hepatitis C virus) livers, CD1d is highly expressed compared to normal controls.
Synonyms:	CD1A; R3; R3G1
Protein Families:	Druggable Genome, Transmembrane
Protein Pathways:	Hematopoietic cell lineage



[View online »](#)

Product images:

Staining of normal human peripheral blood cells with 0.5 ug of Mouse IgG2b K Isotype Control Purified (open histogram) or Anti-Human CD1d Purified (filled histogram) followed by Anti-Mouse IgG Biotin and Streptavidin PE. Cells in the lymphocyte gate were used for analysis.