

## Product datasheet for **TA320059**

### **ORAI1 Mouse Monoclonal Antibody [Clone ID: 3F6H5]**

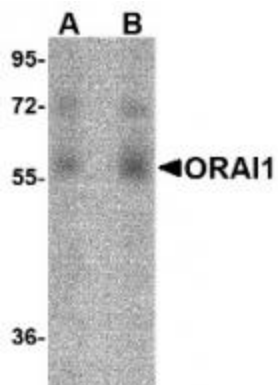
#### **Product data:**

<b>Product Type:</b>	Primary Antibodies
<b>Clone Name:</b>	3F6H5
<b>Applications:</b>	IF, IHC, WB
<b>Recommend Dilution:</b>	WB: 1 - 2 ug/mL, ICC: 2.5 ug/mL, IF: 20 ug/mL
<b>Reactivity:</b>	Human, Mouse, Rat
<b>Host:</b>	Mouse
<b>Isotype:</b>	IgG1
<b>Clonality:</b>	Monoclonal
<b>Immunogen:</b>	Mouse monoclonal ORAI1 antibody was raised against a 16 amino acid synthetic peptide from near the carboxy terminus of human ORAI1.
<b>Formulation:</b>	ORAI1 Monoclonal Antibody is supplied in PBS containing 0.02% sodium azide.
<b>Concentration:</b>	1ug/ul
<b>Purification:</b>	ORAI1 Monoclonal Antibody is immunoaffinity chromatography purified IgG.
<b>Gene Name:</b>	ORAI calcium release-activated calcium modulator 1
<b>Database Link:</b>	<a href="#">NP_116179 Entrez Gene 109305 Mouse</a> <a href="#">Entrez Gene 304496 Rat</a> <a href="#">Entrez Gene 84876 Human</a>
<b>Background:</b>	ORAI1 Monoclonal Antibody: Antigen stimulation of immune cells triggers Ca <sup>++</sup> entry through Ca <sup>++</sup> release-activated Ca <sup>++</sup> (CRAC) channels. ORAI1 is a recently identified four-transmembrane spanning protein that is an essential component of CRAC. A missense mutation in this protein in humans is the cause of one form of hereditary severe combined immune deficiency (SCID) which results in ablated T-cell Ca <sup>++</sup> entry. It has been suggested that ORAI1 functions as a highly selective Ca <sup>++</sup> plasma membrane channel that is gated through interactions with STIM1, the store-activated endoplasmic reticulum Ca <sup>++</sup> sensor. ORAI1 often migrates at a higher than expected molecular weight in SDS-PAGE. This antibody is predicted to have no cross-reactivity to ORAI2 or ORAI3.
<b>Synonyms:</b>	CRACM1; IMD9; ORAT1; TAM2; TMEM142A
<b>Protein Families:</b>	Transmembrane

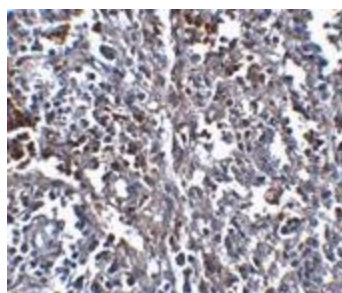


[View online »](#)

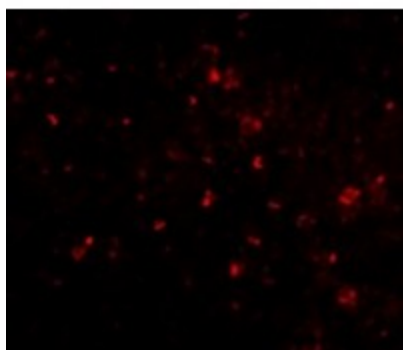
## Product images:



Western blot analysis of ORAI1 in human ovary tissue lysate with ORAI1 antibody at (A) 1 and (B) 2 ug/mL.



Immunohistochemistry of ORAI1 in human spleen tissue with ORAI1 antibody at 2.5 ug/mL.



Immunofluorescence of ORAI1 in human spleen tissue with ORAI1 antibody at 20 ug/mL.