

Product datasheet for TA319910

DC SIGN (CD209) Mouse Monoclonal Antibody [Clone ID: 8B6]

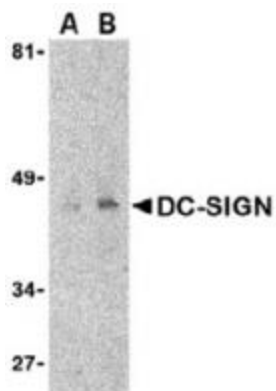
Product data:

Product Type:	Primary Antibodies
Clone Name:	8B6
Applications:	IHC, WB
Recommend Dilution:	WB: 1 - 2 mg/mL, ICC: 5 - 10 mg/mL
Reactivity:	Human
Host:	Mouse
Clonality:	Monoclonal
Immunogen:	A recombinant His-tagged protein fragment corresponding to the extracellular region of human DC-SIGN.
Formulation:	DC-SIGN Monoclonal Antibody is supplied in PBS containing 0.02% sodium azide.
Concentration:	1ug/ul
Purification:	DC-SIGN Monoclonal Antibody is immunoaffinity chromatography purified IgG.
Gene Name:	CD209 molecule
Database Link:	NP_001138365 Entrez Gene 30835 Human
Background:	DC-SIGN Monoclonal Antibody: Dendritic cells (DCs) that control immune responses were recently found to capture and transport HIV from the mucosal area to remote lymph nodes, where DCs hand over HIV to CD4+ T lymphocytes. DCs also amplify the amount of virus and extend the duration of viral infectivity. Multiple strains of HIV-1, HIV-2 and SIV bind to DCs via DC-SIGN. ICAM-3 is the natural ligand for DC-SIGN. A DC-SIGN homologue (termed DC-SIGNR, L-SIGN, and DC-SIGN2) was identified recently. DC-SIGN forms a novel gene family with DC-SIGNR and many alternatively spliced isoforms of DC-SIGN and DC-SIGNR are known to exist. The expression of DC-SIGN was found in mucosal tissues including placenta, small intestine, and rectum.
Synonyms:	CDSIGN; CLEC4L; DC-SIGN; DC-SIGN1
Protein Families:	Druggable Genome

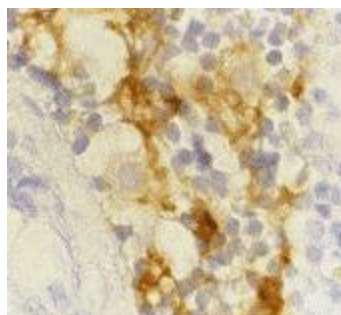


[View online »](#)

Product images:



Western blot detection of DC-SIGN fusion protein in human uterus tissue lysate at (A) 1 and (B) 2 ug/mL.



Immunohistochemistry of DC-SIGN in lymph node tissue with DC-SIGN antibody at 10 ug/mL.