

Product datasheet for TA319869

MD2 (LY96) Mouse Monoclonal Antibody [Clone ID: 1A2E3]

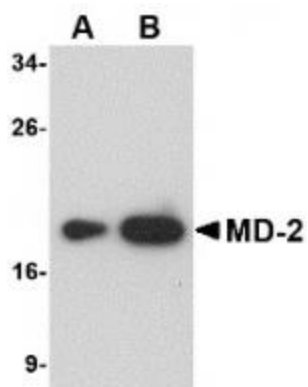
Product data:

Product Type:	Primary Antibodies
Clone Name:	1A2E3
Applications:	IHC, WB
Recommend Dilution:	WB: 1 ug/mL, ICC: 2.5 ug/mL
Reactivity:	Human, Mouse, Rat
Host:	Mouse
Isotype:	IgG1
Clonality:	Monoclonal
Immunogen:	Mouse monoclonal MD-2 antibody was raised against a recombinant protein corresponding to amino acids 2 to 160 of human MD-2
Formulation:	MD-2 Monoclonal Antibody is supplied in PBS containing 0.02% sodium azide.
Concentration:	1ug/ul
Purification:	MD-2 Monoclonal Antibody is immunoaffinity chromatography purified IgG.
Gene Name:	lymphocyte antigen 96
Database Link:	NP_001182726 Entrez Gene 17087 MouseEntrez Gene 448830 RatEntrez Gene 23643 Human
Background:	MD-2 Monoclonal Antibody: MD-2 is a member of the Toll/interleukin-1 receptor (TIR) family, a group of proteins that include the Toll-like receptors (TLRs). TLRs are signaling molecules that recognize different pathogen-associated molecular patterns (PAMPs) and serve as an important link between the innate and adaptive immune responses. TLR4, the major signaling receptor for lipopolysaccharide (LPS), requires the binding of MD-2 to its extracellular region for maximal response to LPS. The specificity of this response is determined by the species of MD-2; e.g., human MD-2 transfected into mouse cells can cause mouse TLR4 to react to LPS analogs that are normally antagonistic to human but not mouse TLR4.
Synonyms:	ESOP-1; ly-96; MD-2; MD2
Protein Families:	Secreted Protein
Protein Pathways:	Pathogenic Escherichia coli infection, Toll-like receptor signaling pathway

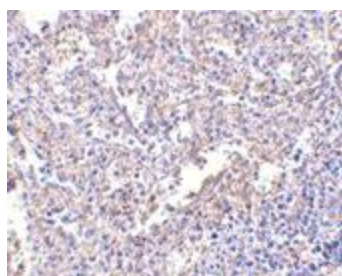


[View online »](#)

Product images:



Western blot analysis of (A) 25 and (B) 125 ng of MD-2 recombinant protein with MD-2 antibody at 1 ug/mL.



Immunohistochemistry of MD-2 in human spleen with MD-2 antibody at 2.5 ug/mL.