

Product datasheet for TA309928

VLDL Receptor (VLDLR) Mouse Monoclonal Antibody [Clone ID: 6A6]

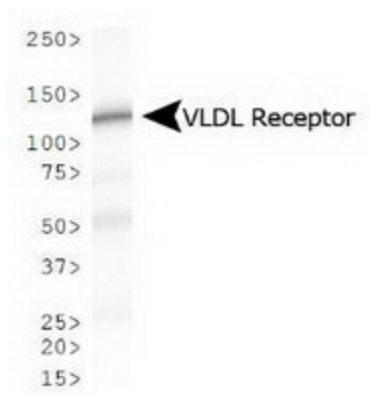
Product data:

Product Type:	Primary Antibodies
Clone Name:	6A6
Applications:	IF, WB
Recommend Dilution:	WB, IF, ICC, IHC
Reactivity:	Bovine, Human, Mouse, Rat
Host:	Mouse
Isotype:	IgG1
Clonality:	Monoclonal
Immunogen:	Synthetic peptide corresponding to the C-terminus of human VLDL Receptor [Swiss-Prot# P98155]
Formulation:	Tris-glycine, 150mM NaCl pH 7.5 and 0.05% Sodium Azide
Concentration:	1 mg/ml
Purification:	Protein G purified
Gene Name:	very low density lipoprotein receptor
Database Link:	NP_003374 Entrez Gene 22359 Mouse Entrez Gene 25696 Rat Entrez Gene 7436 Human
Synonyms:	CAMRQ1; CARMQ1; CHRMQ1; VLDLRCH
Protein Families:	Druggable Genome, Transmembrane

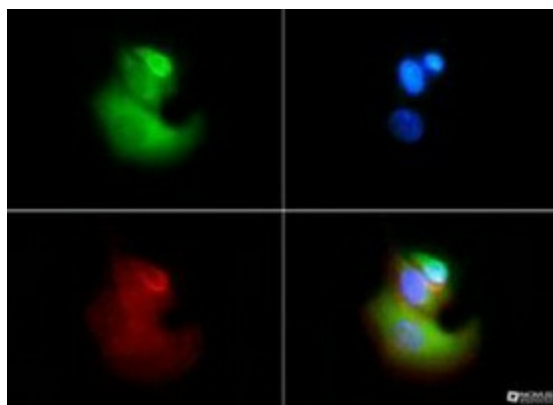


[View online »](#)

Product images:



Western Blot: VLDL Receptor Antibody (6A6) - Western blot analysis of VLDL Receptor expression in mouse kidney using anti-VLDL.



Immunocytochemistry: VLDL Receptor Antibody (6A6) - VLDL Receptor antibody was tested in HeLa cells with FITC (green). Nuclei and actin were counterstained with Dapi (blue) and Phalloidin (red).