

## Product datasheet for **TA309904**

### mtTFA (TFAM) Mouse Monoclonal Antibody [Clone ID: 18G102B2E11]

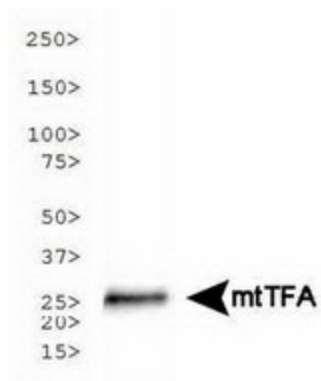
#### Product data:

Product Type:	Primary Antibodies
Clone Name:	18G102B2E11
Applications:	IF, IHC, WB
Recommend Dilution:	WB, IHC, ICC
Reactivity:	Human
Host:	Mouse
Isotype:	IgG
Clonality:	Monoclonal
Immunogen:	Human mtTFA [Swiss-Prot# Q00059]
Formulation:	Tris-glycine, 150mM NaCl pH 7.5 and 0.05% Sodium Azide
Concentration:	1 mg/ml
Purification:	Protein G purified
Gene Name:	transcription factor A, mitochondrial
Database Link:	<a href="#">NP_003192 Entrez Gene 7019 Human</a>
Synonyms:	MTTF1; MTTFA; TCF6; TCF6L1; TCF6L2; TCF6L3
Protein Families:	Druggable Genome, Transcription Factors
Protein Pathways:	Huntington's disease

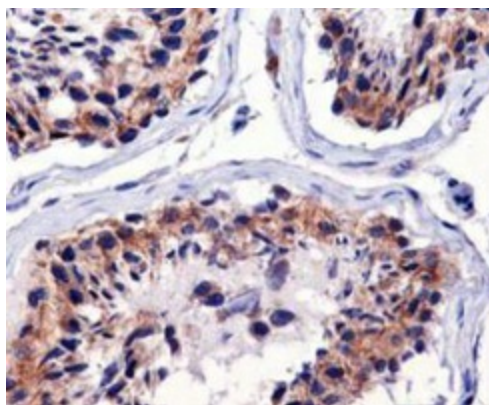


[View online »](#)

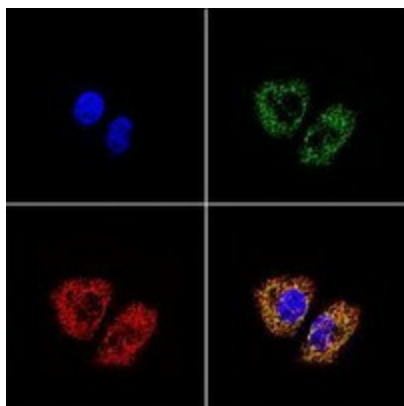
## Product images:



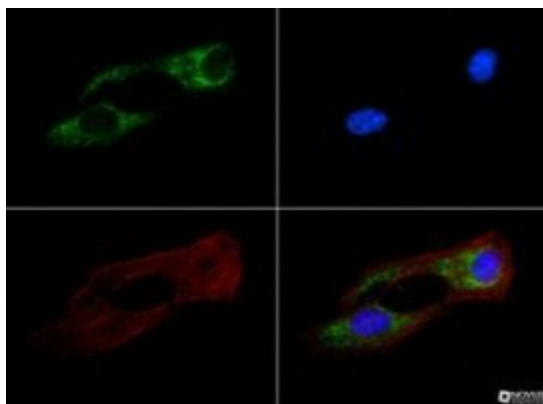
Western Blot: mtTFA Antibody - Western blot analysis of mtTFA expression in HeLa whole cell lysate using anti-mtTFA.



Immunohistochemistry: mtTFA Antibody - Immunohistochemical analysis of mtTFA on human testis using anti-mtTFA.



ICC: mtTFA Antibody - Immunostaining in HeLa cells. C1: DAPI staining 2 nuclei, C2: anti-mtTFA stain with Alexa Fluor 488 secondary ab (green), C3: Mitotracker Red staining mitochondria. Image courtesy of Elizabeth Wang.



Immunocytochemistry: mtTFA Antibody - mtTFA antibody was tested in HeLa cells with FITC (green). Nuclei and actin were counterstained with Dapi (blue) and Phalloidin (red).