

## Product datasheet for **TA309839**

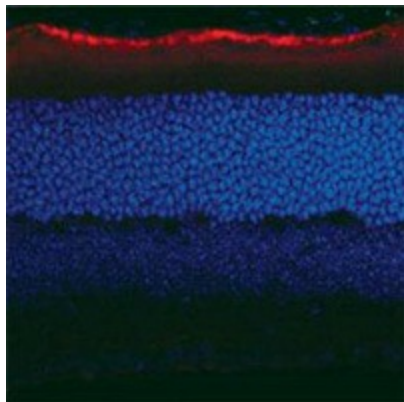
### **RPE65 Mouse Monoclonal Antibody [Clone ID: 401.8B11.3D9]**

#### **Product data:**

Product Type:	Primary Antibodies
Clone Name:	401.8B11.3D9
Applications:	IHC
Recommend Dilution:	WB, IF, ICC, IHC
Reactivity:	Bovine, Human, Mouse, Porcine
Host:	Mouse
Isotype:	IgG1, kappa
Clonality:	Monoclonal
Immunogen:	Bovine RPE microsomal membrane proteins.
Formulation:	PBS and 0.1% Sodium Azide
Concentration:	1 mg/ml
Purification:	Protein A purified
Gene Name:	retinal pigment epithelium-specific protein 65kDa
Database Link:	<a href="#">NP_000320 Entrez Gene 19892 Mouse</a> <a href="#">Entrez Gene 6121 Human</a>
Synonyms:	BCO3; LCA2; mRPE65; rd12; RP20; sRPE65
Protein Families:	Druggable Genome
Protein Pathways:	Retinol metabolism



[View online »](#)

**Product images:**

Immunohistochemistry: RPE65 Antibody (401.8B11.3D9) - Immunohistochemical staining of RPE65 in mouse retina tissue using anti-RPE65.