

Product datasheet for **TA309819**

PRDM1 Mouse Monoclonal Antibody [Clone ID: 3H2-E8]

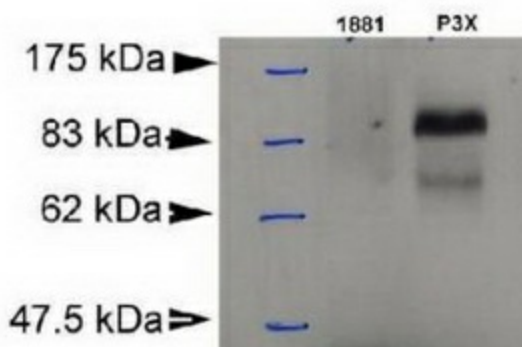
Product data:

Product Type:	Primary Antibodies
Clone Name:	3H2-E8
Applications:	FC, IF, WB
Recommend Dilution:	WB, FC, ICC, IF, IHC, ELISA
Reactivity:	Human, Mouse, Porcine
Host:	Mouse
Isotype:	IgG1
Clonality:	Monoclonal
Immunogen:	A fragment of the mouse Blimp-1 (residues 199-409).
Formulation:	Tris-glycine, 150mM NaCl pH 7.5 and 0.1% Sodium Azide
Concentration:	1.2mg/ml
Purification:	Protein G purified
Gene Name:	PR domain 1
Database Link:	NP_001189 Entrez Gene 12142 Mouse Entrez Gene 639 Human
Synonyms:	BLIMP1; PRDI-BF1
Protein Families:	Transcription Factors

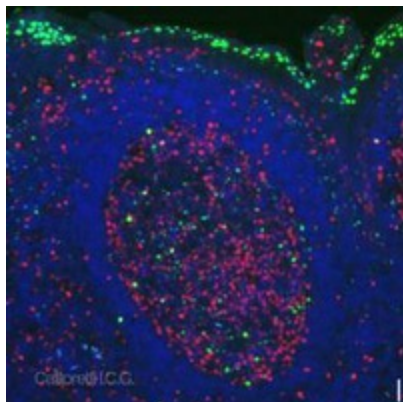


[View online »](#)

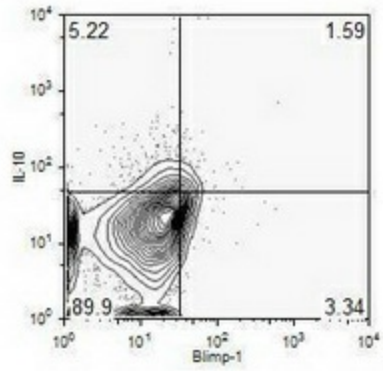
Product images:



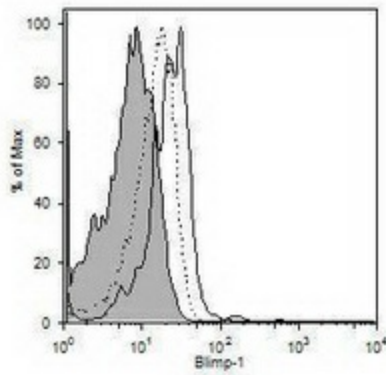
Western Blot: Blimp-1 antibody - Detection of Blimp-1 in murine plasmacytoma cell lysate (P3X) using [TA309794]. 1881: murine pre-B cell lysate (negative control). Photo courtesy of DA Savitsky, Columbia University.



Immunofluorescence: Blimp-1 antibody - Double IF for Blimp-1 (green) and Ki-67 (proliferation, red) with DAPI counterstain, at 10x magnification (scale bar is 10um). Positive surface epithelium and centrocytes are labelled. Photo courtesy of Dr. Giorgio Cattoretti, Institute for Cancer Genetics, Columbia University, NY.



Flow cytometry / FACS analysis: Blimp-1 Antibody (3H2-E8) - IL-10+Blimp-1⁻, IL-10+Blimp-1⁺, IL-10⁻Blimp-1⁺ and IL-10⁻Blimp-1⁻ cells, % total living single splenic CD19⁺ cells of 3 total mice (Tedder Lab; Duke Univ)



Flow cytometry / FACS analysis: Blimp-1 Antibody (3H2-E8) - Blimp-1 expression by IL-10⁺ (black line), IL-10⁻ (dotted line) or CD8⁺ (thin, shaded line) cells (Tedder Lab; Duke Univ)