

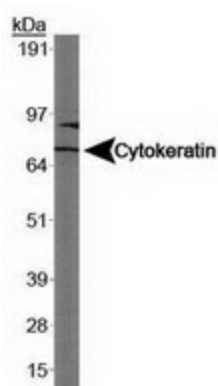
## Product datasheet for TA309725

### Cytokeratin 1 (KRT1) Mouse Monoclonal Antibody [Clone ID: LHK1]

#### Product data:

Product Type:	Primary Antibodies
Clone Name:	LHK1
Applications:	WB
Recommend Dilution:	WB, IF, ICC, IHC
Reactivity:	Human
Host:	Mouse
Isotype:	IgG2a, kappa
Clonality:	Monoclonal
Immunogen:	Epidermal keratin
Formulation:	Tris-glycine, 150mM NaCl pH 7.5 and 0.05% Sodium Azide
Purification:	IgG purified
Gene Name:	keratin 1
Database Link:	<a href="#">NP_006112 Entrez Gene 3848 Human</a>
Synonyms:	CK1; EHK; EHK1; EPPK; K1; KRT1A; NEPPK
Protein Families:	Druggable Genome

#### Product images:



Western Blot: Cytokeratin 1 Antibody (LHK1) -  
Western blot analysis of Cytokeratin 1 in Caco-2  
using anti-LHK1.



[View online »](#)