

Product datasheet for **TA309606**

CAF1 (CHAF1A) Mouse Monoclonal Antibody [Clone ID: SS 1 1-13]

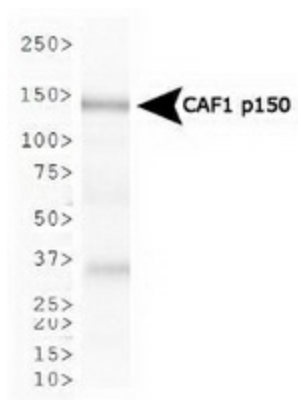
Product data:

Product Type:	Primary Antibodies
Clone Name:	SS 1 1-13
Applications:	IF, WB
Recommend Dilution:	WB, IP, IF
Reactivity:	Human
Host:	Mouse
Isotype:	IgG1
Clonality:	Monoclonal
Immunogen:	Recombinant human CAF-1p150.
Formulation:	0.1% Sodium Azide
Concentration:	18.7mg/ml
Purification:	Ascites
Gene Name:	chromatin assembly factor 1 subunit A
Database Link:	NP_005474 Entrez Gene 10036 Human
Synonyms:	CAF-1; CAF1; CAF1B; CAF1P150; P150
Protein Families:	Stem cell - Pluripotency, Transcription Factors

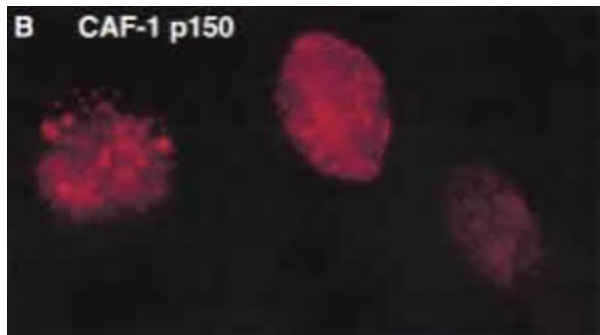


[View online »](#)

Product images:



Western Blot: CAF-1 p150 Antibody (SS 1 1-13) - Western blot analysis of CAF1 p150 expression in Ntera2 whole cell lysate using anti-CAF1 p150.



Immunofluorescent: CAF-1 p150 Antibody (SS 1 1-13) - CAF-1-p150 Antibody (SS1 1-13) - Immunofluorescent staining of CAF-1-p150 in HeLa cells (Shibahara et al 1999).