

## Product datasheet for TA309581

### beta 1 Sodium Potassium ATPase (ATP1B1) Mouse Monoclonal Antibody [Clone ID: 464.8 (also known as 8A)]

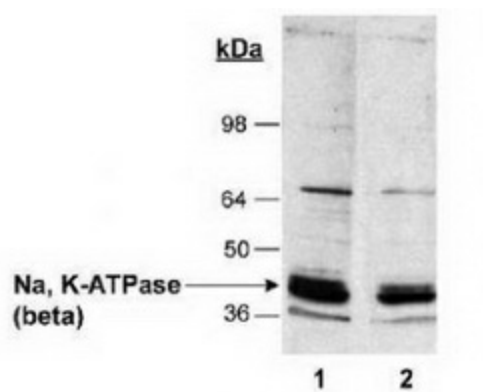
#### Product data:

Product Type:	Primary Antibodies
Clone Name:	464.8 (also known as 8A)
Applications:	WB
Recommend Dilution:	WB
Reactivity:	Bovine, Canine, Human, Porcine, Rabbit, Rat
Host:	Mouse
Isotype:	IgG2a, kappa
Clonality:	Monoclonal
Immunogen:	Purified Na,K-ATPase from rabbit renal outer medulla.
Formulation:	0.02% Sodium Azide
Concentration:	15.2mg/ml
Purification:	Ascites
Gene Name:	ATPase Na <sup>+</sup> /K <sup>+</sup> transporting subunit beta 1
Database Link:	<a href="#">NP_001668</a> <a href="#">Entrez Gene 25650 Rat</a> <a href="#">Entrez Gene 481 Human</a>
Synonyms:	ATP1B
Protein Families:	Transmembrane
Protein Pathways:	Cardiac muscle contraction



[View online »](#)

## Product images:



Western Blot: Sodium Potassium ATPase Beta 1 (464.8) - Detection of Na, K-ATPase (beta) in rat kidney homogenates (20 ug) using TA309581. Lane 1: 1:2, 500 primary. Lane 2: 1:5,000 primary.