

Product datasheet for **TA309577**

ATM Mouse Monoclonal Antibody [Clone ID: 10H11.E12]

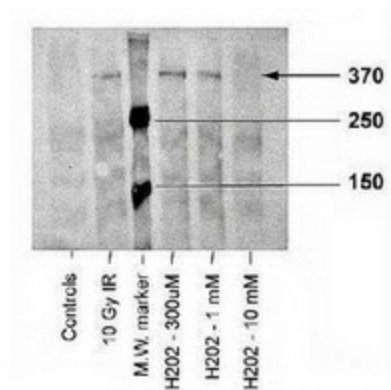
Product data:

Product Type:	Primary Antibodies
Clone Name:	10H11.E12
Applications:	WB
Recommend Dilution:	WB, IP, ICC, IHC
Reactivity:	Human, Mouse, Rat
Host:	Mouse
Isotype:	IgG1, kappa
Clonality:	Monoclonal
Immunogen:	A synthetic peptide with a phosphorylated serine (1981).
Formulation:	Tris-glycine, 150mM NaCl and 0.05% Sodium Azide
Concentration:	0.97mg/ml
Purification:	Protein G purified
Gene Name:	ATM serine/threonine kinase
Database Link:	NP_612149 Entrez Gene 11920 MouseEntrez Gene 300711 RatEntrez Gene 472 Human
Synonyms:	AT1; ATA; ATC; ATD; ATDC; ATE; DKFZp781A0353; MGC74674; TEL1; TELO1
Protein Families:	Druggable Genome, Protein Kinase, Transcription Factors
Protein Pathways:	Apoptosis, Cell cycle, p53 signaling pathway



[View online »](#)

Product images:



Western Blot: ATM Kinase Phosphospecific Antibody (10H11.E12) - Western Blot analysis of ATM-kinase. Sample: Irradiated or peroxidated human fibroblasts.