

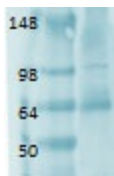
## Product datasheet for TA309483

### Sodium Iodide Symporter (SLC5A5) Mouse Monoclonal Antibody [Clone ID: FP5]

#### Product data:

Product Type:	Primary Antibodies
Clone Name:	FP5
Applications:	WB
Recommend Dilution:	WB, IHC, IF, ELISA
Reactivity:	Human, Mouse, Rat
Host:	Mouse
Isotype:	IgG1, kappa
Clonality:	Monoclonal
Immunogen:	Mannose binding protein hNIS fusion (AA468-643)
Formulation:	PBS, 50% glycerol, 0.09% sodium azide
Gene Name:	solute carrier family 5 member 5
Database Link:	<a href="#">NP_000444</a> <a href="#">Entrez Gene 114479</a> <a href="#">MouseEntrez Gene 114613</a> <a href="#">RatEntrez Gene 6528</a> <a href="#">Human</a>
Background:	This gene encodes a member of the sodium glucose cotransporter family. The encoded protein is responsible for the uptake of iodine in tissues such as the thyroid and lactating breast tissue. The iodine taken up by the thyroid is incorporated into the metabolic regulators triiodothyronine (T3) and tetraiodothyronine (T4). Mutations in this gene are associated with thyroid dyshormonogenesis 1.
Synonyms:	NIS; TDH1
Protein Families:	Druggable Genome, Transmembrane

#### Product images:



Western blot analysis of Sodium Iodide Symporter, Clone FP5, tested on human retina lysate, using a 1:1000 dilution of TA309483



[View online »](#)