

Product datasheet for TA301661

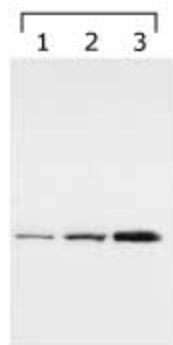
14 3 3 gamma (YWHAG) Mouse Monoclonal Antibody [Clone ID: HS23]

Product data:

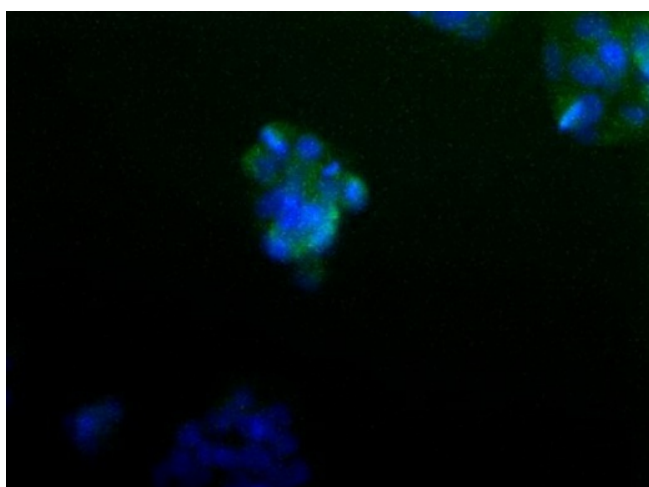
Product Type:	Primary Antibodies
Clone Name:	HS23
Applications:	IF, WB
Recommend Dilution:	WB: 1: 1000
Reactivity:	Bovine, Chicken, Human, Mouse, Rat, Zebrafish
Host:	Mouse
Isotype:	IgG1, kappa
Clonality:	Monoclonal
Immunogen:	This antibody was raised against an N-terminal fragment of human 14-3-3 gamma.
Purification:	Ascites
Gene Name:	tyrosine 3-monooxygenase/tryptophan 5-monooxygenase activation protein gamma
Database Link:	NP_036611 Entrez Gene 22628 MouseEntrez Gene 56010 RatEntrez Gene 7532 Human
Background:	14-3-3 proteins are present as multigene families in most organisms. Signal-induced phosphorylation has the ability to change protein function. Sometimes, however, phosphorylation is not enough to change a protein's function. 14-3-3 proteins play an important role of bringing signal transduction to completion. They regulate many cellular processes that are important in cancer biology, such as apoptosis and cell-cycle checkpoints.
Synonyms:	14-3-3GAMMA; PPP1R170
Protein Families:	Druggable Genome
Protein Pathways:	Cell cycle, Neurotrophin signaling pathway, Oocyte meiosis



[View online »](#)

Product images:

14-3-3 gamma detected in lysates using NB 100-407. Lane 1: HeLa cell lysate, Lanes 2 & 3: bengamide treated lysates (8h and 24h, respectively).



Immunocytochemistry/Immunofluorescence:
Detection of 14-3-3 gamma (green) in HepG2 cells using TA301661. Nuclei (Blue) are counterstained with Hoechst 33258.