

## Product datasheet for TA301555

### Wilms Tumor Protein (WT1) Mouse Monoclonal Antibody [Clone ID: 6F-H2]

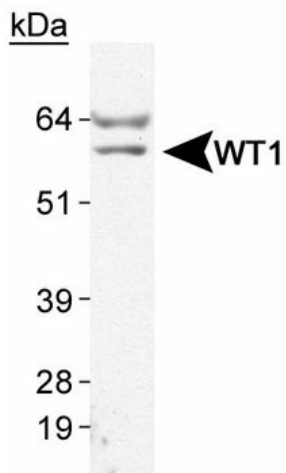
#### Product data:

Product Type:	Primary Antibodies
Clone Name:	6F-H2
Applications:	IHC, WB
Recommend Dilution:	WB: 2 ug/ml
Reactivity:	Human
Host:	Mouse
Isotype:	IgG1, kappa
Clonality:	Monoclonal
Immunogen:	Human recombinant WT1 protein (residues 1-181). [Swiss-Prot# P19544]
Formulation:	Tris-glycine, 150mM NaCl and 0.05% sodium azide
Purification:	IgG purified
Gene Name:	Wilms tumor 1
Database Link:	<a href="#">NP_077744 Entrez Gene 7490 Human</a>
Background:	Wilms?umor (WT) is an embryonal malignancy of the kidney that affects 1 in 10,000 infants and, like retinoblastoma, is observed in both sporadic and inherited forms. The Wilms?umor locus has been mapped at chromosome 11p13 as a tumor suppressor gene which encodes a DNA binding protein with four zinc fingers and a glutamine-proline rich amino terminus. The Wilms?umor protein binds the DNA sequence GCGGGGCG, a recognition element common to the early growth response (Egr) family of Zn <sup>2+</sup> finger transcriptional activators. However, in contrast to Egr transcription factors, WT1 behaves as a transcriptional repressor in transient transfection assays with synthetic promotor constructs.
Synonyms:	AWT1; EWS-WT1; GUD; NPHS4; WAGR; WIT-2; WT33
Protein Families:	Druggable Genome, Transcription Factors

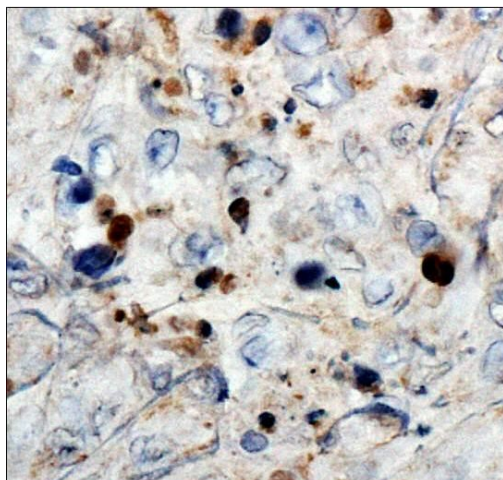


[View online »](#)

## Product images:



Western Blot- Wilms Tumor 1 Antibody (6F-H2) detects WT1 in 293 cell lysate



Immunohistochemistry- IHC analysis of Wilms Tumor 1 in human renal cancer using DAB with hematoxylin counterstain.