

Product datasheet for **TA301468**

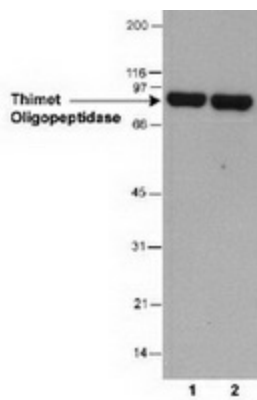
Thimet Oligopeptidase (THOP1) Mouse Monoclonal Antibody [Clone ID: 4D6]

Product data:

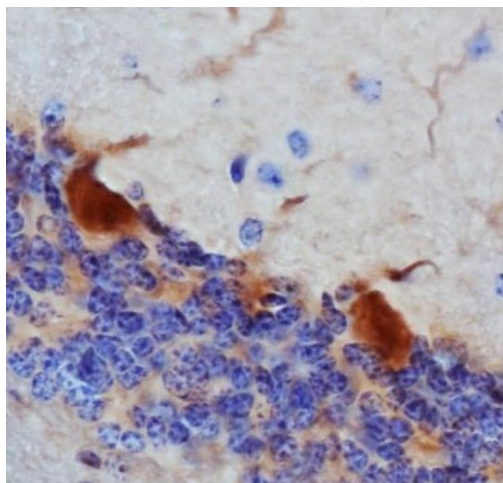
| | |
|---------------------|---|
| Product Type: | Primary Antibodies |
| Clone Name: | 4D6 |
| Applications: | IHC, WB |
| Recommend Dilution: | WB: 1:750-1:3000 |
| Reactivity: | Human |
| Host: | Mouse |
| Isotype: | IgG2b |
| Clonality: | Monoclonal |
| Immunogen: | A synthetic peptide corresponding to residues 56-72 of human thimet oligopeptidase. |
| Formulation: | Tris-glycine and 150mM NaCl and 0.05% sodium azide |
| Concentration: | 1.54 mg/ml |
| Gene Name: | thimet oligopeptidase 1 |
| Database Link: | NP_003240 Entrez Gene 7064 Human |
| Background: | A steady-state level of amyloid beta-peptide (Abeta) represents a balance between its biosynthesis from the amyloid precursor protein (APP) through the action of the beta and gamma-secretases and its catabolism by a variety of proteolytic enzymes. Thimet Oligopeptidase (THOP1) has been shown to promote A-beta degradation. It has also been shown to play a role in antigen presentation, metabolism of neuropeptides under 20 amino acids, and cytoplasmic peptide degradation. |
| Synonyms: | EP24.15; MEPD_HUMAN; MP78; TOP |
| Protein Families: | Druggable Genome, Protease |
| Protein Pathways: | Renin-angiotensin system |



[View online »](#)

Product images:

Detection of thimet oligopeptidase in HeLa whole cell lysate (30 ug). Lane 1: 0.5 ug/ml; lane 2: 2 ug/ml. 1 minute ECL exposure.



Immunohistochemistry: Thimet Oligopeptidase Antibody (4D6) - Analysis of Thimet Oligopeptidase in mouse brain using DAB with hematoxylin counterstain.