

## Product datasheet for TA301411

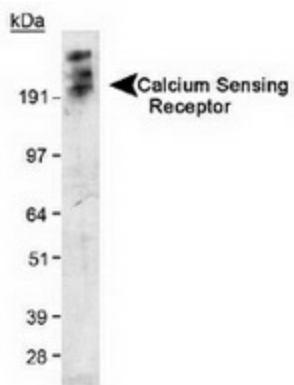
### Calcium Sensing Receptor (CASR) Mouse Monoclonal Antibody [Clone ID: HL 1499]

#### Product data:

Product Type:	Primary Antibodies
Clone Name:	HL 1499
Applications:	WB
Recommend Dilution:	WB: 1:50-1:200
Reactivity:	Human, Mouse, Rabbit, Rat
Host:	Mouse
Isotype:	IgG1, kappa
Clonality:	Monoclonal
Immunogen:	N-terminal, extracellular region of human Calcium Sensing Receptor (see reference 2).
Formulation:	Tris-glycine, 150mM NaCl and 0.05% sodium azide
Gene Name:	calcium sensing receptor
Database Link:	<a href="#">NP_000379 Entrez Gene 12374 MouseEntrez Gene 24247 RatEntrez Gene 846 Human</a>
Background:	The calcium-sensing receptor (CaSR) is an integral membrane protein that is a member of the G protein-coupled receptor family. It senses changes in the extracellular concentration of calcium ions. The activity of this receptor is mediated by a G-protein that activates a phosphatidylinositol-calcium second messenger system.
Synonyms:	CAR; EIG8; FHH; FIH; GPRC2A; HHC; HHC1; HYPOC1; NSHPT; PCAR1
Protein Families:	Druggable Genome, GPCR, Transmembrane



[View online »](#)

**Product images:**

Detection of Calcium Sensing Receptor in transfected 293 cell lysate. ECL exposure, 5 minutes. In this photo, the protein has aggregated and thus the higher MW band as expected.