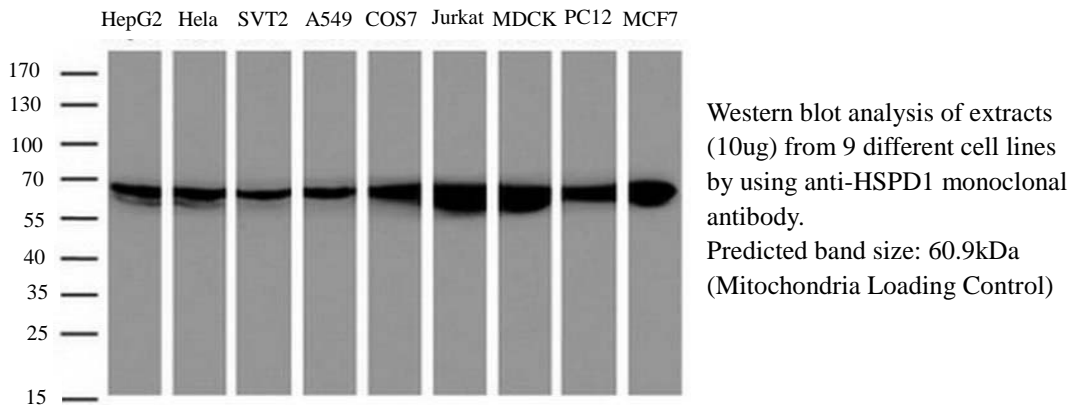


## TA-14

### Mouse Anti-HSP60 (HSPD1) mAb

<b>Clone</b>	OTI4E4
<b>Isotype</b>	IgG1
<b>Amount</b>	0.1 ml
<b>Target name</b>	HSPD1, CPN60, GROEL, HLD4, HSP-60, HSP60, HSP65, HuCHA60
<b>Immunogen</b>	Human HSPD1 protein produced in E.coli
<b>Species reactivity</b>	Human, mouse, rat, monkey, dog
<b>Application</b>	WB
<b>Suggested dilutions</b>	1:1000-1:2000
<b>Buffer</b>	PBS (pH7.3) containing 1% BSA, 50% glycerol and 0.02% sodium azide
<b>Purification</b>	Purified from mouse ascites fluids by affinity chromatography
<b>Storage/Stability</b>	Shipped at -20°C or with ice packs. Upon delivery store at -20°C. Dilute in PBS (pH7.3) if necessary. Stable for 12 months from date of receipt. Avoid repeated freeze-thaws.
<b>Function</b>	HSP60 is a member of the chaperonin family. The encoded mitochondrial protein may function as a signaling molecule in the innate immune system. This protein is essential for the folding and assembly of newly imported proteins in the mitochondria.

#### Experimental data



*Notes: This product is to be used for laboratory only. Not for diagnostic use.*

