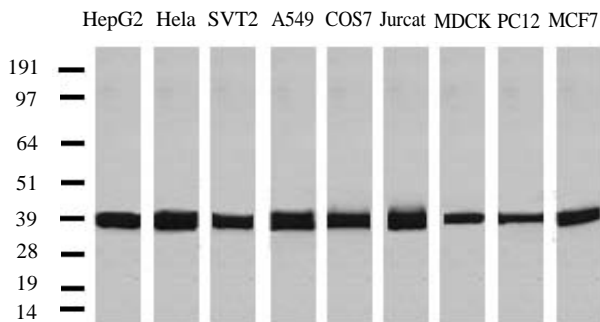


## TA-08 Mouse Anti-GAPDH mAb

<b>Clone</b>	OTI2D9
<b>Isotype</b>	IgG1
<b>Amount</b>	0.1 ml
<b>Target name</b>	G3PD, GAPD, HEL-S-162eP
<b>Immunogen</b>	Human GAPDH protein produced in HEK293T cells
<b>Species reactivity</b>	Human, mouse, rat, monkey, dog
<b>Application</b>	WB
<b>Suggested dilutions</b>	1:1000-1:2000
<b>Buffer</b>	PBS (pH7.3) containing 1% BSA, 50% glycerol and 0.02% sodium azide
<b>Purification</b>	Purified from hybridoma culture supernatant by affinity chromatography
<b>Storage/Stability</b>	Shipped at -20°C or with ice packs. Upon delivery store at -20°C. Dilute in PBS (pH7.3) if necessary. Stable for 12 months from date of receipt. Avoid repeated freeze-thaws.
<b>Function</b>	GAPDH is an enzyme that catalyzes the sixth step of glycolysis and thus serves to break down glucose for energy and carbon molecules. GAPDH gene is often stably and constitutively expressed at high levels in most tissues and cells, it is considered a housekeeping gene.

### Experimental data



*Notes: This product is to be used for laboratory only. Not for diagnostic use.*

