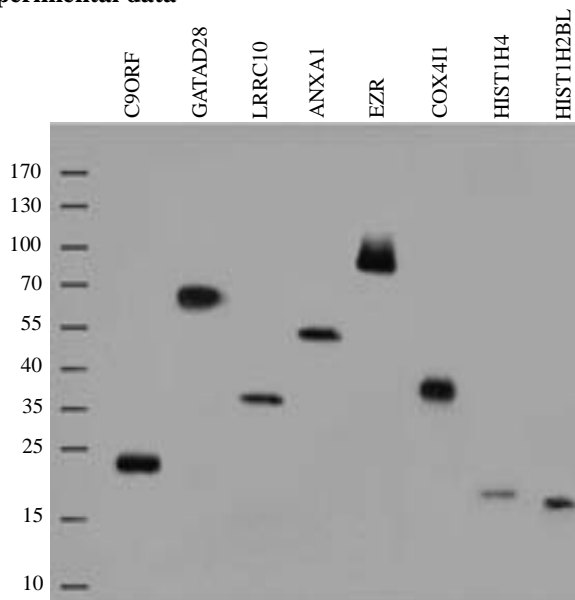


TA-02 Mouse Anti-His mAb

Immunogen	Synthetic peptide (HHHHHH) coupled to KLH
Product name	Mouse anti-His monoclonal antibody
Clone	OTI2B5
Isotype	IgG1
Amount	0.1 ml
Reactivity	His tag
Storage/Stability	Stable for 1 year at -20°C from date of shipment. For maximum recovery of product, centrifuge the original vial after thawing and prior to opening the cap. Avoid repeated freeze-thaws.
Application	WB
Suggested dilutions	1:1000-1:2000

Experimental data



Anti-His Immunoblot analysis of six different HEK293T over-expression lysates containing different His tagged recombinant proteins, and two his tagged bacterial lysates produced in *E. coli* at 1:1000 dilution.

Notes: This product is to be used for laboratory only. Not for diagnostic use.

